

Product datasheet for **TA311868**

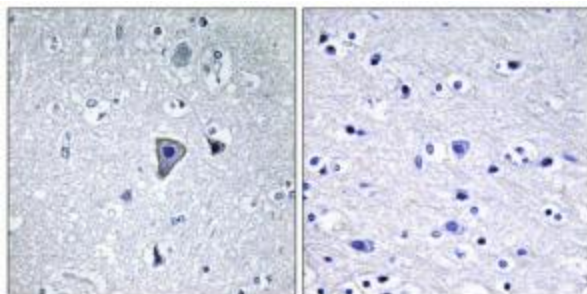
Metabotropic Glutamate Receptor 1 (GRM1) Rabbit Polyclonal Antibody

Product data:

Product Type:	Primary Antibodies
Applications:	IHC
Recommended Dilution:	IHC: 1:50~1:100, ELISA: 1:5000
Reactivity:	Human, Mouse, Rat
Host:	Rabbit
Isotype:	IgG
Clonality:	Polyclonal
Immunogen:	The antiserum was produced against synthesized peptide derived from internal of human GRM1.
Formulation:	Phosphate buffered saline (without Mg ²⁺ and Ca ²⁺), pH 7.4, 150mM NaCl, 0.02% sodium azide and 50% glycerol.
Concentration:	lot specific
Purification:	The antibody was affinity-purified from rabbit antiserum by affinity-chromatography using epitope-specific immunogen.
Conjugation:	Unconjugated
Storage:	Store at -20°C as received.
Stability:	Stable for 12 months from date of receipt.
Gene Name:	glutamate metabotropic receptor 1
Database Link:	NP_000829 Entrez Gene 14816 Mouse Entrez Gene 24414 Rat Entrez Gene 2911 Human Q13255
Synonyms:	GPRC1A; GRM1A; mGlu1; MGLUR1; MGLUR1A; SCAR13
Note:	GRM1 antibody detects endogenous levels of total GRM1 protein.
Protein Families:	Druggable Genome, GPCR, Transmembrane
Protein Pathways:	Calcium signaling pathway, Gap junction, Long-term depression, Long-term potentiation, Neuroactive ligand-receptor interaction



[View online »](#)

Product images:

Immunohistochemistry analysis of paraffin-embedded human brain tissue using GRM1 antibody. The picture on the right is treated with the synthesized peptide.