

Product datasheet for **TA311865**

Chk1 (CHEK1) Rabbit Polyclonal Antibody

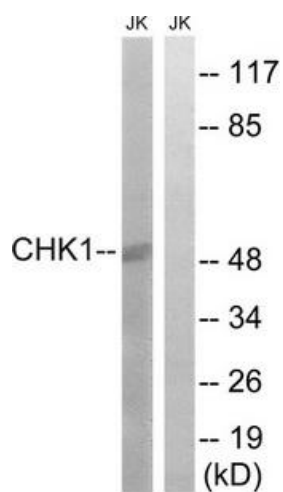
Product data:

Product Type:	Primary Antibodies
Applications:	WB
Recommended Dilution:	WB: 1:500~1:3000, ELISA: 1:10000
Reactivity:	Human
Host:	Rabbit
Isotype:	IgG
Clonality:	Polyclonal
Immunogen:	This antiserum was produced against synthesized non-phosphopeptide derived from human Chk1 around the phosphorylation site of Serine 280.
Formulation:	Phosphate buffered saline (without Mg ²⁺ and Ca ²⁺), pH 7.4, 150mM NaCl, 0.02% sodium azide and 50% glycerol.
Concentration:	lot specific
Purification:	The antibody was affinity-purified from rabbit antiserum by affinity-chromatography using epitope-specific immunogen.
Conjugation:	Unconjugated
Storage:	Store at -20°C as received.
Stability:	Stable for 12 months from date of receipt.
Gene Name:	checkpoint kinase 1
Database Link:	NP_001265 Entrez Gene 1111 Human O14757
Synonyms:	CHK1
Note:	Chk1 (Ab-280) Antibody detects endogenous levels of total Chk1 protein.
Protein Families:	Druggable Genome, Protein Kinase, Stem cell - Pluripotency
Protein Pathways:	Cell cycle, p53 signaling pathway



[View online »](#)

Product images:



Western blot analysis of extracts from JurKat cells, using Chk1 (Ab-280) Antibody. The lane on the right is treated with the synthesized peptide.