

## Product datasheet for **TA311854**

### Cyclin E1 (CCNE1) Rabbit Polyclonal Antibody

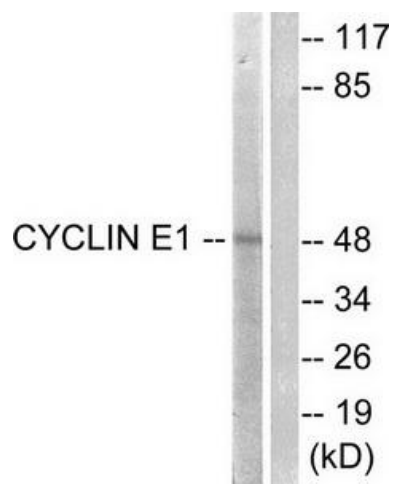
#### Product data:

Product Type:	Primary Antibodies
Applications:	IF, IHC, WB
Recommended Dilution:	WB: 1:500~1:3000, IHC: 1:50~1:100, IF: 1:500~1:1000, ELISA: 1:10000
Reactivity:	Human, Mouse
Host:	Rabbit
Isotype:	IgG
Clonality:	Polyclonal
Immunogen:	The antiserum was produced against synthesized non-phosphopeptide derived from human Cyclin E1 around the phosphorylation site of threonine 395 (L-L-T-P-P).
Formulation:	Phosphate buffered saline (without Mg <sup>2+</sup> and Ca <sup>2+</sup> ), pH 7.4, 150mM NaCl, 0.02% sodium azide and 50% glycerol.
Concentration:	lot specific
Purification:	The antibody was affinity-purified from rabbit antiserum by affinity-chromatography using epitope-specific immunogen.
Conjugation:	Unconjugated
Storage:	Store at -20°C as received.
Stability:	Stable for 12 months from date of receipt.
Gene Name:	cyclin E1
Database Link:	<a href="#">NP_001229</a> <a href="#">Entrez Gene 12447 Mouse</a> <a href="#">Entrez Gene 898 Human</a> <a href="#">P24864</a>
Synonyms:	CCNE; pCCNE1
Note:	Cyclin E1 (Ab-395) antibody detects endogenous levels of total Cyclin E1 protein.
Protein Families:	Druggable Genome, Stem cell - Pluripotency, Stem cell relevant signaling - DSL/Notch pathway, Transcription Factors
Protein Pathways:	Cell cycle, Oocyte meiosis, p53 signaling pathway, Pathways in cancer, Prostate cancer, Small cell lung cancer

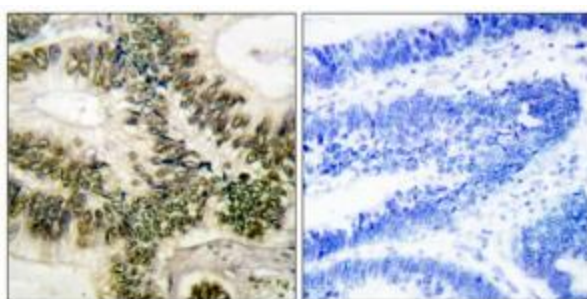


[View online »](#)

## Product images:



Western blot analysis of extracts from HeLa cells, treated with Paclitaxel (1 uM, 60mins), using Cyclin E1 (Ab-395) antibody (#TA311854, Line 1 and 2). The lane on the right is treated with the synthesized peptide.



Immunohistochemical analysis of paraffin-embedded human colon carcinoma tissue using Cyclin E1 (Ab-395) antibody (#TA311854). The picture on the right is treated with the synthesized peptide.



Immunofluorescence analysis of HuvEc cells, using Cyclin E1 (Ab-395) antibody (#TA311854). The picture on the right is treated with the synthesized peptide.