

Product datasheet for **TA311852**

Cyclin E1 (CCNE1) Rabbit Polyclonal Antibody

Product data:

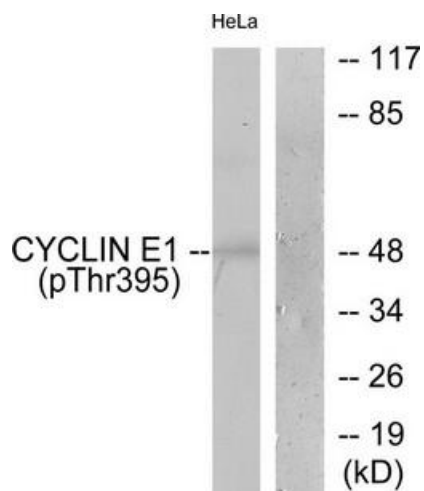
Product Type:	Primary Antibodies
Applications:	IHC, WB
Recommended Dilution:	WB: 1:500~1:3000, IHC: 1:50~1:100, ELISA: 1:10000
Reactivity:	Human
Modifications:	Phospho-specific
Host:	Rabbit
Isotype:	IgG
Clonality:	Polyclonal
Immunogen:	The antiserum was produced against synthesized phosphopeptide derived from human Cyclin E1 around the phosphorylation site of threonine 395 (L-L-TP-P-P).
Formulation:	Phosphate buffered saline (without Mg ²⁺ and Ca ²⁺), pH 7.4, 150mM NaCl, 0.02% sodium azide and 50% glycerol.
Concentration:	lot specific
Purification:	The antibody was affinity-purified from rabbit antiserum by affinity-chromatography using epitope-specific immunogen.
Conjugation:	Unconjugated
Storage:	Store at -20°C as received.
Stability:	Stable for 12 months from date of receipt.
Gene Name:	cyclin E1
Database Link:	NP_001229 Entrez Gene 898 Human P24864
Synonyms:	CCNE1; pCCNE1
Note:	Cyclin E1 (phospho-Thr395) antibody detects endogenous levels of Cyclin E1 only when phosphorylated at threonine 395
Protein Families:	Druggable Genome, Stem cell - Pluripotency, Stem cell relevant signaling - DSL/Notch pathway, Transcription Factors



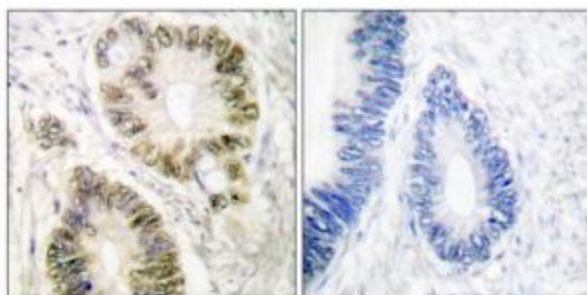
[View online »](#)

Protein Pathways: Cell cycle, Oocyte meiosis, p53 signaling pathway, Pathways in cancer, Prostate cancer, Small cell lung cancer

Product images:



Western blot analysis of extracts from HeLa cells, treated with Paclitasel (1uM, 60mins), using Cyclin E1 (phospho-Thr395) antibody. The lane on the right is treated with the synthesized peptide.



Immunohistochemical analysis of paraffin-embedded human colon carcinoma tissue using Cyclin E1 (phospho-Thr395) antibody. The picture on the right is treated with the synthesized peptide.