

## Product datasheet for **TA311850**

### Caspase-6 (CASP6) Rabbit Polyclonal Antibody

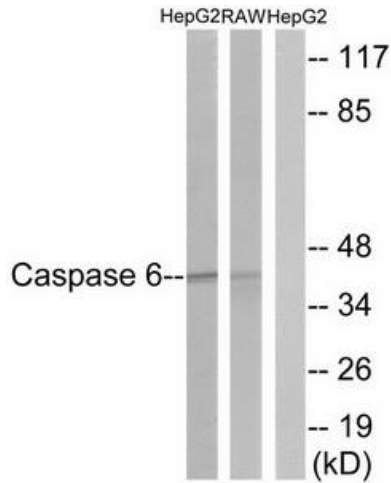
#### Product data:

Product Type:	Primary Antibodies
Applications:	IF, IHC, WB
Recommended Dilution:	WB: 1:500~1:3000, IHC: 1:50~1:100, IF: 1:100~1:500, ELISA: 1:20000
Reactivity:	Human, Mouse, Rat
Host:	Rabbit
Isotype:	IgG
Clonality:	Polyclonal
Immunogen:	The antiserum was produced against synthesized non-phosphopeptide derived from human Caspase 6 around the phosphorylation site of serine 257 (K-V-SP-Q-R).
Formulation:	Phosphate buffered saline (without Mg <sup>2+</sup> and Ca <sup>2+</sup> ), pH 7.4, 150mM NaCl, 0.02% sodium azide and 50% glycerol.
Concentration:	lot specific
Purification:	The antibody was affinity-purified from rabbit antiserum by affinity-chromatography using epitope-specific immunogen.
Conjugation:	Unconjugated
Storage:	Store at -20°C as received.
Stability:	Stable for 12 months from date of receipt.
Gene Name:	caspase 6
Database Link:	<a href="#">NP_001217</a> <a href="#">Entrez Gene 12368 MouseEntrez Gene 83584 RatEntrez Gene 839 Human P55212</a>
Synonyms:	MCH2
Note:	Caspase 6 (Ab-257) antibody detects endogenous levels of total Caspase 6 protein.
Protein Families:	Druggable Genome, Protease, Stem cell - Pluripotency
Protein Pathways:	Apoptosis

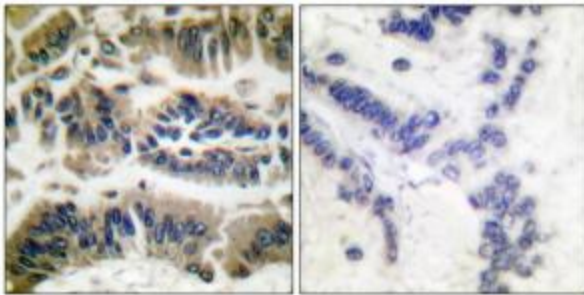


[View online »](#)

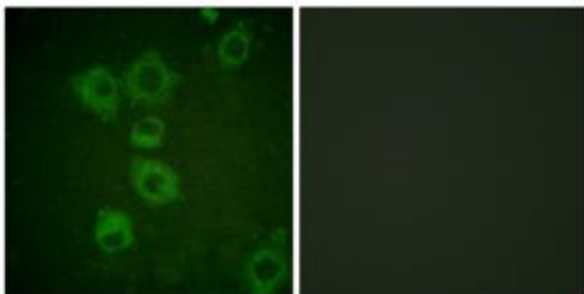
Product images:



Western blot analysis of extracts from A431 cells, using Caspase 6 (Ab-257) antibody. The lane on the right is treated with the synthesized peptide.



Immunohistochemical analysis of paraffin-embedded human breast carcinoma tissue using Caspase 6 (Ab-257) antibody. The picture on the right is treated with the synthesized peptide.



Immunofluorescence analysis of HuvEc cells, using Caspase 6 (Ab-257) antibody. The picture on the right is treated with the synthesized peptide.