

## Product datasheet for **TA311848**

### Caspase-6 (CASP6) Rabbit Polyclonal Antibody

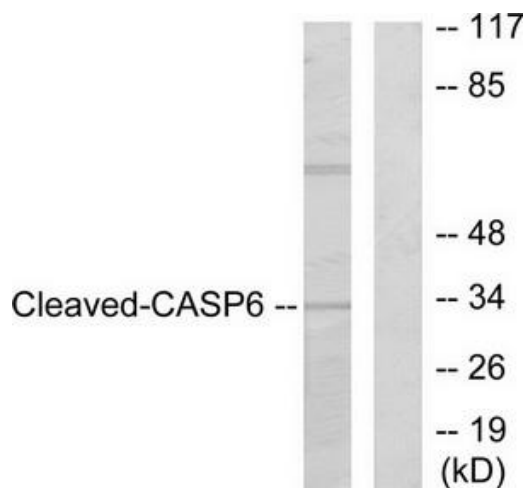
#### Product data:

Product Type:	Primary Antibodies
Applications:	IHC, WB
Recommended Dilution:	WB: 1:500~1:3000, IHC: 1:50~1:100, ELISA: 1:40000
Reactivity:	Human, Rat
Host:	Rabbit
Isotype:	IgG
Clonality:	Polyclonal
Immunogen:	The antiserum was produced against synthesized peptide derived from human Caspase 6.
Formulation:	Phosphate buffered saline (without Mg <sup>2+</sup> and Ca <sup>2+</sup> ), pH 7.4, 150mM NaCl, 0.02% sodium azide and 50% glycerol.
Concentration:	lot specific
Purification:	The antibody was affinity-purified from rabbit antiserum by affinity-chromatography using epitope-specific immunogen.
Conjugation:	Unconjugated
Storage:	Store at -20°C as received.
Stability:	Stable for 12 months from date of receipt.
Gene Name:	caspase 6
Database Link:	<a href="#">NP_001217</a> <a href="#">Entrez Gene 83584 Rat</a> <a href="#">Entrez Gene 839 Human</a> <a href="#">P55212</a>
Synonyms:	MCH2
Note:	Caspase 6 (cleaved-Asp179) antibody detects endogenous levels of fragment of activated Caspase 6 resulting from cleavage adjacent to Asp179.
Protein Families:	Druggable Genome, Protease, Stem cell - Pluripotency
Protein Pathways:	Apoptosis

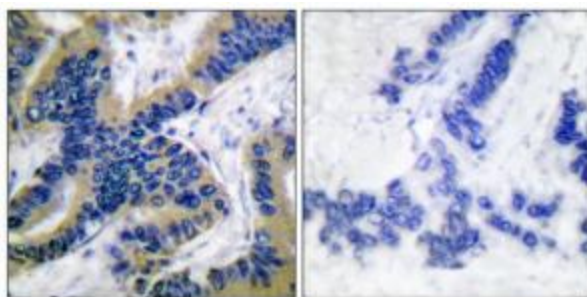


[View online »](#)

## Product images:



Western blot analysis of extracts from 293 cells, treated with Etoposide (25uM, 60mins), using Caspase 6 (cleaved-Asp179) antibody. The lane on the right is treated with the synthesized peptide.



Immunohistochemical analysis of paraffin-embedded human lung carcinoma tissue using Caspase 6 (cleaved-Asp179) antibody. The picture on the right is treated with the synthesized peptide.