

## Product datasheet for **TA311844**

### Bak (BAK1) Rabbit Polyclonal Antibody

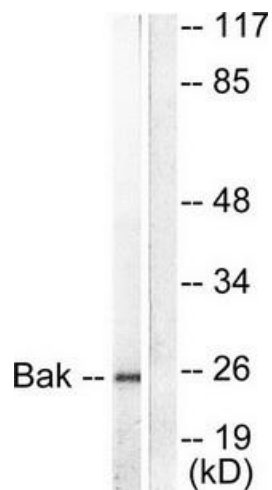
#### Product data:

Product Type:	Primary Antibodies
Applications:	IHC, WB
Recommended Dilution:	WB: 1:500~1:3000, IHC: 1:50~1:100, ELISA: 1:10000
Reactivity:	Human
Host:	Rabbit
Isotype:	IgG
Clonality:	Polyclonal
Immunogen:	The antiserum was produced against synthesized peptide derived from human Bak.
Formulation:	Phosphate buffered saline (without Mg <sup>2+</sup> and Ca <sup>2+</sup> ), pH 7.4, 150mM NaCl, 0.02% sodium azide and 50% glycerol.
Concentration:	lot specific
Purification:	The antibody was affinity-purified from rabbit antiserum by affinity-chromatography using epitope-specific immunogen.
Conjugation:	Unconjugated
Storage:	Store at -20°C as received.
Stability:	Stable for 12 months from date of receipt.
Gene Name:	BCL2 antagonist/killer 1
Database Link:	<a href="#">NP_001179</a> <a href="#">Entrez Gene 578 Human</a> <a href="#">Q16611</a>
Synonyms:	BAK; BAK-LIKE; BCL2L7; CDN1
Note:	Bak antibody detects endogenous levels of total Bak protein.
Protein Families:	Druggable Genome, Stem cell - Pluripotency, Transmembrane

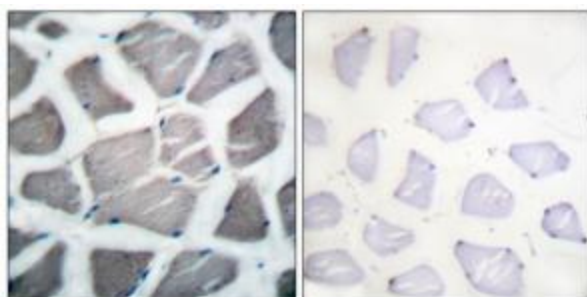


[View online »](#)

## Product images:



Western blot analysis of extracts from 293 cells, using Bak antibody (#TA311844). The lane on the right is treated with the synthesized peptide.



Immunohistochemical analysis of paraffin-embedded human skeletal muscle tissue using Bak antibody (#TA311844). The picture on the right is treated with the synthesized peptide.