

## Product datasheet for **TA311843**

### alpha Actinin (ACTN1) Rabbit Polyclonal Antibody

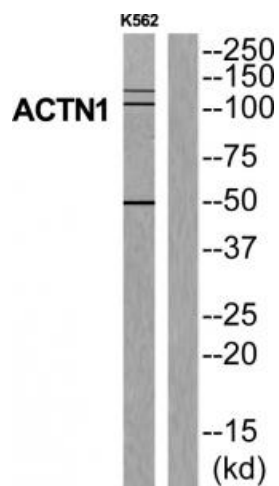
#### Product data:

Product Type:	Primary Antibodies
Applications:	WB
Recommended Dilution:	WB: 1:500~1:3000, ELISA: 1:40000
Reactivity:	Human, Mouse, Rat
Host:	Rabbit
Isotype:	IgG
Clonality:	Polyclonal
Immunogen:	The antiserum was produced against synthesized peptide derived from N-terminal of human ACTN1.
Formulation:	Phosphate buffered saline (without Mg <sup>2+</sup> and Ca <sup>2+</sup> ), pH 7.4, 150mM NaCl, 0.02% sodium azide and 50% glycerol.
Concentration:	lot specific
Purification:	The antibody was affinity-purified from rabbit antiserum by affinity-chromatography using epitope-specific immunogen.
Conjugation:	Unconjugated
Storage:	Store at -20°C as received.
Stability:	Stable for 12 months from date of receipt.
Gene Name:	actinin alpha 1
Database Link:	<a href="#">NP_001093</a> <a href="#">Entrez Gene 81634 Rat</a> <a href="#">Entrez Gene 109711 Mouse</a> <a href="#">Entrez Gene 87 Human</a> <a href="#">P12814</a>
Synonyms:	BDPLT15
Note:	ACTN1 antibody detects endogenous levels of total ACTN1 protein.
Protein Families:	Druggable Genome, ES Cell Differentiation/IPS
Protein Pathways:	Adherens junction, Arrhythmogenic right ventricular cardiomyopathy (ARVC), Focal adhesion, Leukocyte transendothelial migration, Regulation of actin cytoskeleton, Systemic lupus erythematosus, Tight junction



[View online »](#)

## Product images:



Western blot analysis of extracts from K562 cells, using ACTN1 antibody. The lane on the right is treated with the synthesized peptide.