

## Product datasheet for **TA311842**

### alpha Actinin 4 (ACTN4) Rabbit Polyclonal Antibody

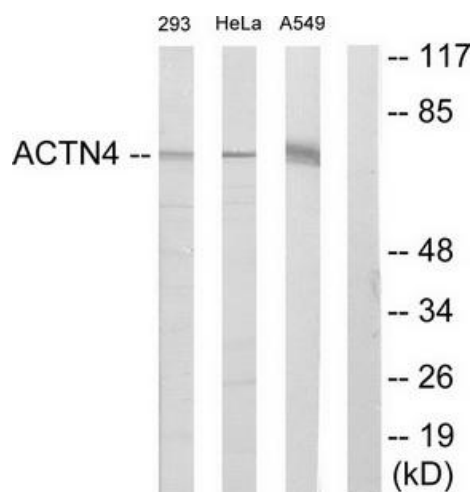
#### Product data:

Product Type:	Primary Antibodies
Applications:	WB
Recommended Dilution:	WB: 1:500~1:3000, ELISA: 1:20000
Reactivity:	Human, Mouse, Rat
Host:	Rabbit
Isotype:	IgG
Clonality:	Polyclonal
Immunogen:	The antiserum was produced against synthesized peptide derived from internal of human ACTN4.
Formulation:	Phosphate buffered saline (without Mg <sup>2+</sup> and Ca <sup>2+</sup> ), pH 7.4, 150mM NaCl, 0.02% sodium azide and 50% glycerol.
Concentration:	lot specific
Purification:	The antibody was affinity-purified from rabbit antiserum by affinity-chromatography using epitope-specific immunogen.
Conjugation:	Unconjugated
Storage:	Store at -20°C as received.
Stability:	Stable for 12 months from date of receipt.
Gene Name:	actinin alpha 4
Database Link:	<a href="#">NP_004915</a> <a href="#">Entrez Gene 60595 MouseEntrez Gene 63836 RatEntrez Gene 81 Human O43707</a>
Synonyms:	ACTININ-4; FSGS; FSGS1
Note:	ACTN4 antibody detects endogenous levels of total ACTN4 protein.
Protein Families:	Druggable Genome
Protein Pathways:	Adherens junction, Arrhythmogenic right ventricular cardiomyopathy (ARVC), Focal adhesion, Leukocyte transendothelial migration, Regulation of actin cytoskeleton, Systemic lupus erythematosus, Tight junction



[View online »](#)

## Product images:



Western blot analysis of extracts from 293 cells, HeLa cells and A549 cells, using ACTN4 antibody. The lane on the right is treated with the synthesized peptide.