

Product datasheet for **TA311837**

IKK gamma (IKBKG) Rabbit Polyclonal Antibody

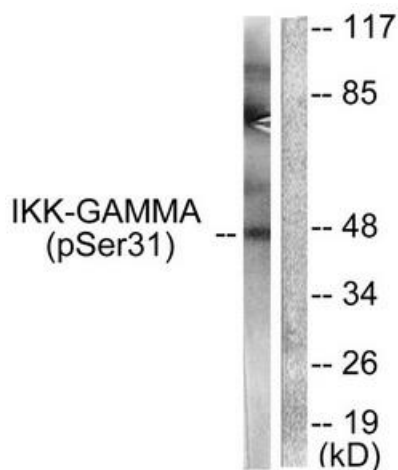
Product data:

Product Type:	Primary Antibodies
Applications:	IHC, WB
Recommended Dilution:	WB: 1:500~1:3000, IHC: 1:50~1:100, ELISA: 1:1000
Reactivity:	Human, Mouse
Modifications:	Phospho-specific
Host:	Rabbit
Isotype:	IgG
Clonality:	Polyclonal
Immunogen:	The antiserum was produced against synthesized phosphopeptide derived from human IKK-? around the phosphorylation site of serine 31 (E-E-SP-P-L).
Formulation:	Phosphate buffered saline (without Mg ²⁺ and Ca ²⁺), pH 7.4, 150mM NaCl, 0.02% sodium azide and 50% glycerol.
Concentration:	lot specific
Purification:	The antibody was affinity-purified from rabbit antiserum by affinity-chromatography using epitope-specific immunogen.
Conjugation:	Unconjugated
Storage:	Store at -20°C as received.
Stability:	Stable for 12 months from date of receipt.
Gene Name:	inhibitor of kappa light polypeptide gene enhancer in B-cells, kinase gamma
Database Link:	NP_003630 Entrez Gene 16151 Mouse Entrez Gene 8517 Human Q9Y6K9
Synonyms:	AMCBX1; FIP-3; FIP3; Fip3p; IKK-gamma; IKKAP1; IKKG; IMD33; IP; IP1; IP2; IPD2; NEMO; ZC2HC9
Note:	IKK-. (Phospho-Ser31) antibody detects endogenous levels of IKK-. only when phosphorylated at serine 31.
Protein Families:	Druggable Genome, Transcription Factors

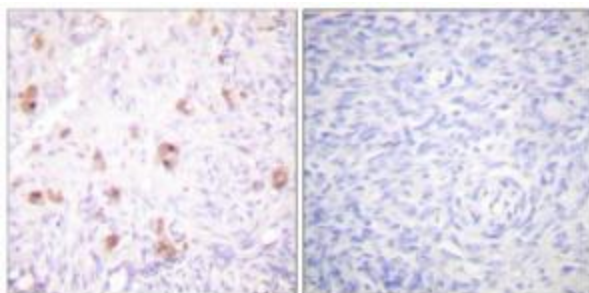

[View online »](#)

Protein Pathways:

Acute myeloid leukemia, Adipocytokine signaling pathway, Apoptosis, B cell receptor signaling pathway, Chemokine signaling pathway, Chronic myeloid leukemia, Cytosolic DNA-sensing pathway, Epithelial cell signaling in Helicobacter pylori infection, MAPK signaling pathway, NOD-like receptor signaling pathway, Pancreatic cancer, Pathways in cancer, Primary immunodeficiency, Prostate cancer, RIG-I-like receptor signaling pathway, Small cell lung cancer, T cell receptor signaling pathway, Toll-like receptor signaling pathway

Product images:


Western blot analysis of extracts from 293 cells treated with TNF- α (20ng /ml, 5mins), using IKK- γ (Phospho-Ser31) Antibody (#TA311837). The lane on the right is treated with the synthesized peptide.



Immunohistochemical analysis of paraffin-embedded human ovary tissue, using IKK- γ (Phospho-Ser31) Antibody (#TA311837). The picture on the right is treated with the synthesized peptide.