

Product datasheet for **TA311834**

TNFRSF1B Rabbit Polyclonal Antibody

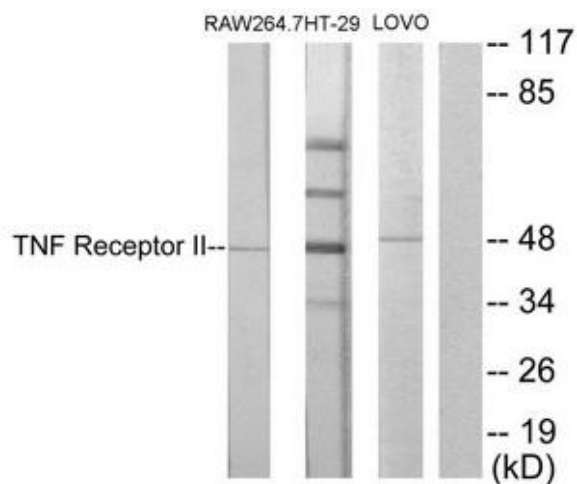
Product data:

Product Type:	Primary Antibodies
Applications:	IF, WB
Recommended Dilution:	WB: 1:500~1:3000, IF: 1:100~1:500, ELISA: 1:20000
Reactivity:	Human, Mouse, Rat
Host:	Rabbit
Isotype:	IgG
Clonality:	Polyclonal
Immunogen:	The antiserum was produced against synthesized peptide derived from C-terminal of human TNF Receptor II.
Formulation:	Phosphate buffered saline (without Mg ²⁺ and Ca ²⁺), pH 7.4, 150mM NaCl, 0.02% sodium azide and 50% glycerol.
Concentration:	lot specific
Purification:	The antibody was affinity-purified from rabbit antiserum by affinity-chromatography using epitope-specific immunogen.
Conjugation:	Unconjugated
Storage:	Store at -20°C as received.
Stability:	Stable for 12 months from date of receipt.
Gene Name:	tumor necrosis factor receptor superfamily member 1B
Database Link:	NP_001057 Entrez Gene 21938 Mouse Entrez Gene 156767 Rat Entrez Gene 7133 Human P20333
Synonyms:	CD120b; p75; p75TNFR; TBPII; TNF-R-II; TNF-R75; TNFBR; TNFR1B; TNFR2; TNFR80
Note:	TNF Receptor II antibody detects endogenous levels of total TNF Receptor II protein.
Protein Families:	Druggable Genome, Secreted Protein, Transmembrane
Protein Pathways:	Adipocytokine signaling pathway, Amyotrophic lateral sclerosis (ALS), Cytokine-cytokine receptor interaction

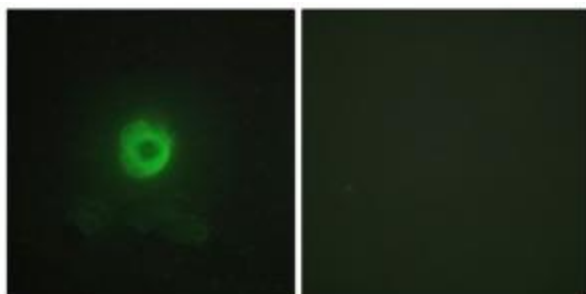


[View online »](#)

Product images:



Western blot analysis of extracts from RAW264.7 cells, HT-29 cells and LOVO cells, using TNF Receptor II antibody. The lane on the right is treated with the synthesized peptide.



Immunofluorescence analysis of HeLa cells, using TNF Receptor II antibody. The picture on the right is treated with the synthesized peptide.