

Product datasheet for **TA311833**

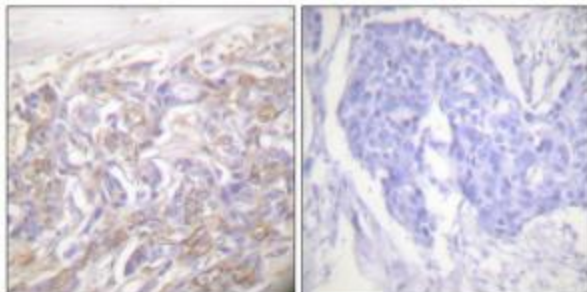
TNFRSF1A Rabbit Polyclonal Antibody

Product data:

Product Type:	Primary Antibodies
Applications:	IHC
Recommended Dilution:	IHC: 1:50~1:100, ELISA: 1:20000
Reactivity:	Human, Mouse, Rat
Host:	Rabbit
Isotype:	IgG
Clonality:	Polyclonal
Immunogen:	The antiserum was produced against synthesized peptide derived from Internal of human TNF receptor-1.
Formulation:	Phosphate buffered saline (without Mg ²⁺ and Ca ²⁺), pH 7.4, 150mM NaCl, 0.02% sodium azide and 50% glycerol.
Concentration:	lot specific
Purification:	The antibody was affinity-purified from rabbit antiserum by affinity-chromatography using epitope-specific immunogen.
Conjugation:	Unconjugated
Storage:	Store at -20°C as received.
Stability:	Stable for 12 months from date of receipt.
Gene Name:	tumor necrosis factor receptor superfamily member 1A
Database Link:	NP_001056 Entrez Gene 21937 Mouse Entrez Gene 25625 Rat Entrez Gene 7132 Human P19438
Synonyms:	CD120a; FPF; MS5; p55; p55-R; p60; TBP1; TNF-R; TNF-R-I; TNF-R55; TNFAR; TNFR1; TNFR1-d2; TNFR55
Note:	TNF receptor-1 antibody detects endogenous levels of total TNF receptor-1 protein.
Protein Families:	Druggable Genome, Secreted Protein, Transcription Factors, Transmembrane
Protein Pathways:	Adipocytokine signaling pathway, Alzheimer's disease, Amyotrophic lateral sclerosis (ALS), Apoptosis, Cytokine-cytokine receptor interaction, MAPK signaling pathway



[View online »](#)

Product images:

Immunohistochemistry analysis of paraffin-embedded human breast carcinoma tissue, using TNF receptor-1 antibody. The picture on the right is treated with the synthesized peptide.