

## Product datasheet for **TA311829**

### TrkB (NTRK2) Rabbit Polyclonal Antibody

#### Product data:

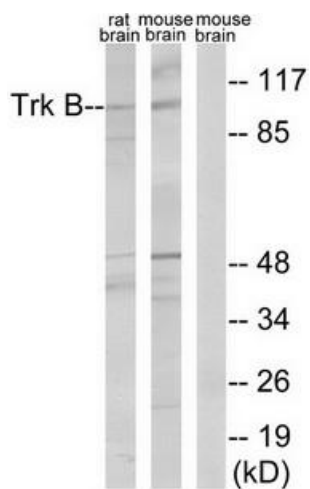
Product Type:	Primary Antibodies
Applications:	IHC, WB
Recommended Dilution:	WB: 1:500~1000, IHC: 1:50~100, ELISA: 1:10000
Reactivity:	Human, Mouse, Rat
Modifications:	Phospho-specific
Host:	Rabbit
Isotype:	IgG
Clonality:	Polyclonal
Immunogen:	The antiserum was produced against synthesized non-phosphopeptide derived from human Trk B around the phosphorylation site of tyrosine 515 (P-Q-YP-F-G).
Formulation:	Phosphate buffered saline (without Mg <sup>2+</sup> and Ca <sup>2+</sup> ), pH 7.4, 150mM NaCl, 0.02% sodium azide and 50% glycerol.
Concentration:	lot specific
Purification:	The antibody was affinity-purified from rabbit antiserum by affinity-chromatography using epitope-specific immunogen.
Conjugation:	Unconjugated
Storage:	Store at -20°C as received.
Stability:	Stable for 12 months from date of receipt.
Gene Name:	neurotrophic receptor tyrosine kinase 2
Database Link:	<a href="#">NP_006171</a> <a href="#">Entrez Gene 18212 Mouse</a> <a href="#">Entrez Gene 25054 Rat</a> <a href="#">Entrez Gene 4915 Human</a> <a href="#">Q16620</a>
Synonyms:	GP145-TrkB; trk-B; TRKB
Note:	Trk B (Ab-515) antibody detects endogenous levels of total Trk B protein. The amino acid position may vary depending on the source of reference sequence: position 516 base on NP_001018074.1, position 532 base on NP_006171.2.
Protein Families:	Druggable Genome, Protein Kinase, Transmembrane



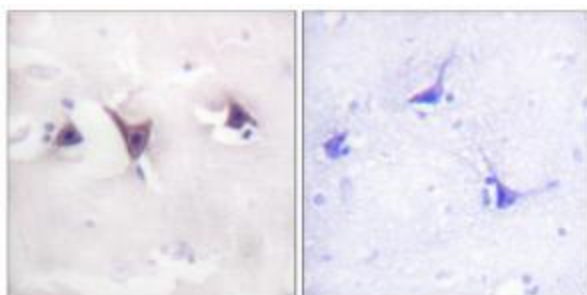
[View online »](#)

Protein Pathways: MAPK signaling pathway, Neurotrophin signaling pathway

**Product images:**



Western blot analysis of extracts from 3T3 cells treated with PBS (60min), using Trk B (Ab-515) antibody (#TA311829, Line 1 and 2). The lane on the right is treated with the synthesized peptide.



Immunohistochemical analysis of paraffin-embedded human brain tissue using Trk B (Ab-515) antibody (#TA311829). The picture on the right is treated with the synthesized peptide.