

Product datasheet for **TA311824**

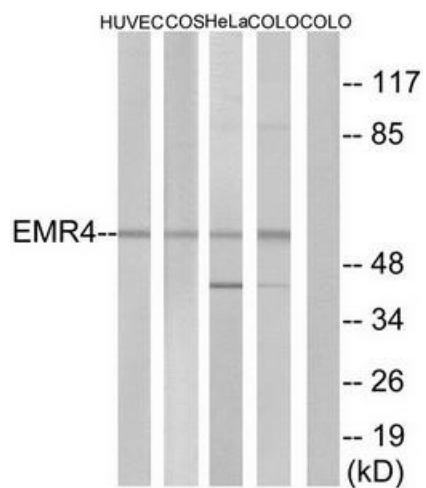
Adgre4 Rabbit Polyclonal Antibody

Product data:

Product Type:	Primary Antibodies
Applications:	WB
Recommended Dilution:	WB: 1:500~1:3000, ELISA: 1:20000
Reactivity:	Human
Modifications:	Phospho-specific
Host:	Rabbit
Isotype:	IgG
Clonality:	Polyclonal
Immunogen:	The antiserum was produced against synthesized peptide derived from internal of human EMR4.
Formulation:	Phosphate buffered saline (without Mg ²⁺ and Ca ²⁺), pH 7.4, 150mM NaCl, 0.02% sodium azide and 50% glycerol.
Concentration:	lot specific
Purification:	The antibody was affinity-purified from rabbit antiserum by affinity-chromatography using epitope-specific immunogen.
Conjugation:	Unconjugated
Storage:	Store at -20°C as received.
Stability:	Stable for 12 months from date of receipt.
Gene Name:	adhesion G protein-coupled receptor E4
Database Link:	NP_631877 Entrez Gene 52614 Mouse Q91ZE5
Note:	EMR4 antibody detects endogenous levels of total EMR4 protein.



[View online »](#)

Product images:


Western blot analysis of extracts from HUVEC cells, COS-7 cells, HeLa cells and COLO cells, using EMR4 antibody. The lane on the right is treated with the synthesized peptide.