

Product datasheet for **TA311823**

BUB3 Rabbit Polyclonal Antibody

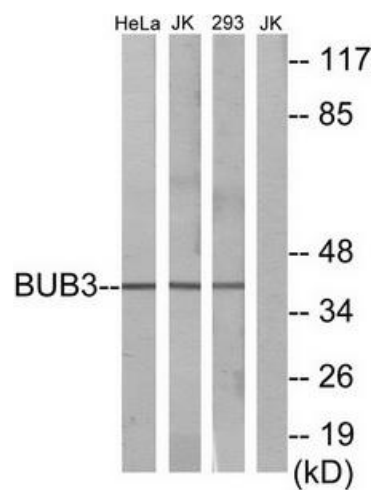
Product data:

Product Type:	Primary Antibodies
Applications:	WB
Recommended Dilution:	WB: 1:500~1:3000, ELISA: 1:1000
Reactivity:	Human, Mouse, Rat
Modifications:	Phospho-specific
Host:	Rabbit
Isotype:	IgG
Clonality:	Polyclonal
Immunogen:	The antiserum was produced against synthesized peptide derived from C-terminal of human BUB3.
Formulation:	Phosphate buffered saline (without Mg ²⁺ and Ca ²⁺), pH 7.4, 150mM NaCl, 0.02% sodium azide and 50% glycerol.
Concentration:	lot specific
Purification:	The antibody was affinity-purified from rabbit antiserum by affinity-chromatography using epitope-specific immunogen.
Conjugation:	Unconjugated
Storage:	Store at -20°C as received.
Stability:	Stable for 12 months from date of receipt.
Gene Name:	BUB3, mitotic checkpoint protein
Database Link:	NP_004716 Entrez Gene 12237 Mouse Entrez Gene 361662 Rat Entrez Gene 9184 Human O43684
Synonyms:	BUB3L; hBUB3
Note:	BUB3 antibody detects endogenous levels of total BUB3 protein.
Protein Families:	Druggable Genome
Protein Pathways:	Cell cycle



[View online »](#)

Product images:



Western blot analysis of extracts from HeLa cells, Jurkat cells and 293 cells, using BUB3 antibody. The lane on the right is treated with the synthesized peptide.