

Product datasheet for **TA311822**

RPL19 Rabbit Polyclonal Antibody

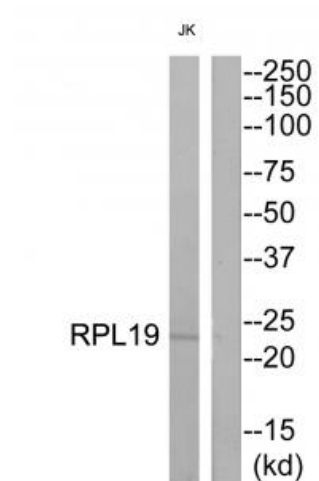
Product data:

Product Type:	Primary Antibodies
Applications:	WB
Recommended Dilution:	WB: 1:500~1:3000, ELISA: 1:20000
Reactivity:	Human, Mouse, Rat
Modifications:	Phospho-specific
Host:	Rabbit
Isotype:	IgG
Clonality:	Polyclonal
Immunogen:	The antiserum was produced against synthesized peptide derived from Internal of human RPL19.
Formulation:	Phosphate buffered saline (without Mg ²⁺ and Ca ²⁺), pH 7.4, 150mM NaCl, 0.02% sodium azide and 50% glycerol.
Concentration:	lot specific
Purification:	The antibody was affinity-purified from rabbit antiserum by affinity-chromatography using epitope-specific immunogen.
Conjugation:	Unconjugated
Storage:	Store at -20°C as received.
Stability:	Stable for 12 months from date of receipt.
Gene Name:	ribosomal protein L19
Database Link:	NP_000972 Entrez Gene 19921 Mouse Entrez Gene 81767 Rat Entrez Gene 6143 Human P84098
Synonyms:	L19
Note:	RPL19 antibody detects endogenous levels of total RPL19 protein
Protein Pathways:	Ribosome



[View online »](#)

Product images:



Western blot analysis of extracts from JurKat cells, using RPL19 antibody. The lane on the right is treated with the synthesized peptide.