

## Product datasheet for **TA311820**

### PTGS1 Rabbit Polyclonal Antibody

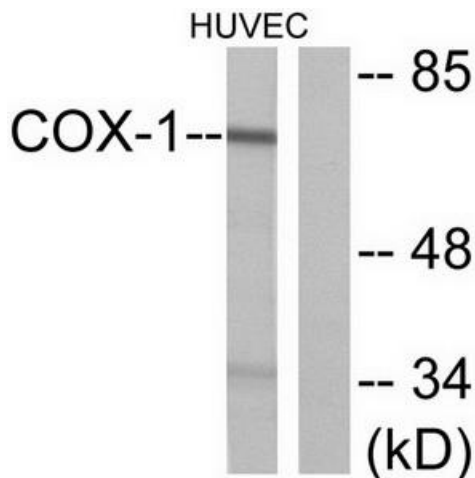
#### Product data:

Product Type:	Primary Antibodies
Applications:	IHC, WB
Recommended Dilution:	WB: 1:500~1:3000, IHC: 1:50~1:100, ELISA: 1:40000
Reactivity:	Human
Modifications:	Phospho-specific
Host:	Rabbit
Isotype:	IgG
Clonality:	Polyclonal
Immunogen:	The antiserum was produced against synthesized peptide derived from human COX1.
Formulation:	Phosphate buffered saline (without Mg <sup>2+</sup> and Ca <sup>2+</sup> ), pH 7.4, 150mM NaCl, 0.02% sodium azide and 50% glycerol.
Concentration:	lot specific
Purification:	The antibody was affinity-purified from rabbit antiserum by affinity-chromatography using epitope-specific immunogen.
Conjugation:	Unconjugated
Storage:	Store at -20°C as received.
Stability:	Stable for 12 months from date of receipt.
Gene Name:	prostaglandin-endoperoxide synthase 1
Database Link:	<a href="#">NP_542158</a> <a href="#">Entrez Gene 5742 Human</a> <a href="#">P23219</a>
Synonyms:	COX1; COX3; HS; PCOX1; PES-1; PGG; PGHS-1; PGHS1; PHS1; PTGHS
Note:	COX1 antibody detects endogenous levels of total COX1 protein.
Protein Families:	Druggable Genome, Transmembrane
Protein Pathways:	Arachidonic acid metabolism, Metabolic pathways

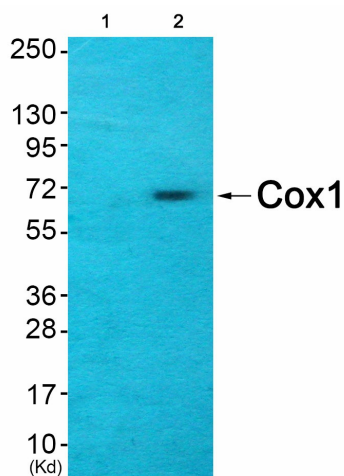


[View online »](#)

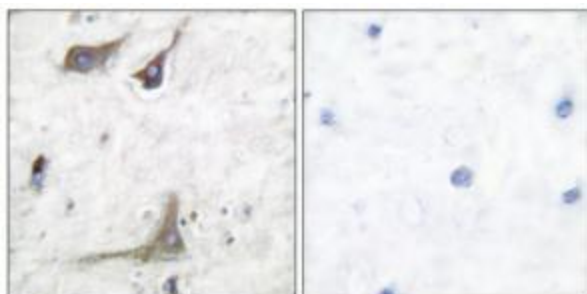
Product images:



Western blot analysis of extracts from HuvEc cells, using COX1 antibody (#TA311820).The lane on the right is treated with the synthesized peptide.



Western blot analysis of extracts from HuvEc cells (Lane 2), using Cox1 Antibody. The lane on the left is treated with synthesized peptide.



Immunohistochemical analysis of paraffin-embedded human brain tissue using COX1 antibody (#TA311820).The picture on the right is treated with the synthesized peptide.