

Product datasheet for **TA311818**

Plasma Kallikrein 1B (KLKB1) Rabbit Polyclonal Antibody

Product data:

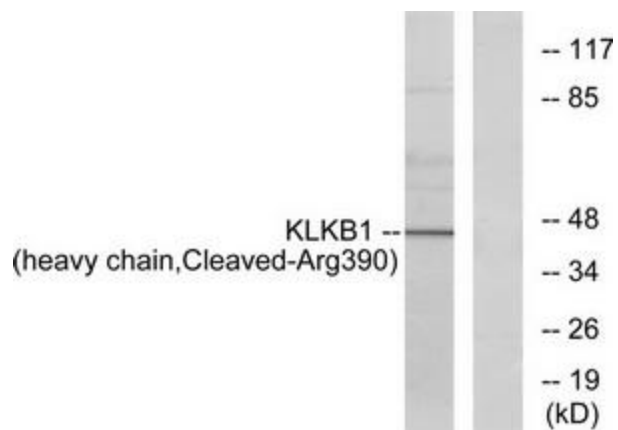
Product Type:	Primary Antibodies
Applications:	WB
Recommended Dilution:	WB: 1:500~1:3000, ELISA: 1:10000
Reactivity:	Human
Modifications:	Phospho-specific
Host:	Rabbit
Isotype:	IgG
Clonality:	Polyclonal
Immunogen:	The antiserum was produced against synthesized peptide derived from human KLKB1. Purification: The antibody was affinity-purified from rabbit antiserum by affinity-chromatography using epitope-specific immunogen.
Formulation:	Phosphate buffered saline (without Mg ²⁺ and Ca ²⁺), pH 7.4, 150mM NaCl, 0.02% sodium azide and 50% glycerol.
Concentration:	lot specific
Purification:	The antibody was affinity-purified from rabbit antiserum by affinity-chromatography using epitope-specific immunogen.
Conjugation:	Unconjugated
Storage:	Store at -20°C as received.
Stability:	Stable for 12 months from date of receipt.
Gene Name:	kallikrein B1
Database Link:	NP_000883 Entrez Gene 3818 Human P03952
Synonyms:	KLK3; PPK
Note:	KLKB1 (heavy chain, Cleaved-Arg390) antibody detects endogenous levels of fragment of activated KLKB1 resulting from cleavage adjacent to Arg390.
Protein Families:	Druggable Genome, Protease



[View online »](#)

Protein Pathways: Complement and coagulation cascades

Product images:



Western blot analysis of extracts from HeLa cells, using KLKB1 (heavy chain, Cleaved-Arg390) antibody. The lane on the right is treated with the synthesized peptide.