

## Product datasheet for **TA311810**

### Metabotropic Glutamate Receptor 7 (GRM7) Rabbit Polyclonal Antibody

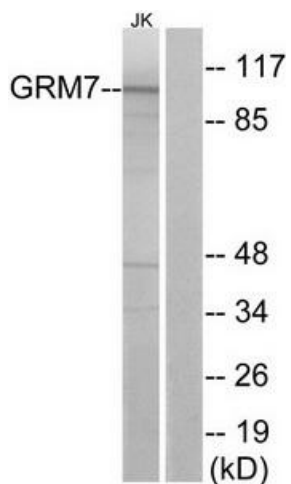
#### Product data:

Product Type:	Primary Antibodies
Applications:	IF, WB
Recommended Dilution:	WB: 1:500~1:3000, IF: 1:100~1:500, ELISA: 1:40000
Reactivity:	Human, Mouse, Rat
Modifications:	Phospho-specific
Host:	Rabbit
Isotype:	IgG
Clonality:	Polyclonal
Immunogen:	The antiserum was produced against synthesized peptide derived from C-terminal of human GRM7.
Formulation:	Phosphate buffered saline (without Mg <sup>2+</sup> and Ca <sup>2+</sup> ), pH 7.4, 150mM NaCl, 0.02% sodium azide and 50% glycerol.
Concentration:	lot specific
Purification:	The antibody was affinity-purified from rabbit antiserum by affinity-chromatography using epitope-specific immunogen.
Conjugation:	Unconjugated
Storage:	Store at -20°C as received.
Stability:	Stable for 12 months from date of receipt.
Gene Name:	glutamate metabotropic receptor 7
Database Link:	<a href="#">NP_000835</a> <a href="#">Entrez Gene 81672 Rat</a> <a href="#">Entrez Gene 108073 Mouse</a> <a href="#">Entrez Gene 2917 Human</a> <a href="#">Q14831</a>
Synonyms:	GLUR7; GPRC1G; MGLU7; MGLUR7; PPP1R87
Note:	GRM7 antibody detects endogenous levels of total GRM7 protein.
Protein Families:	Druggable Genome, GPCR, Transmembrane
Protein Pathways:	Neuroactive ligand-receptor interaction

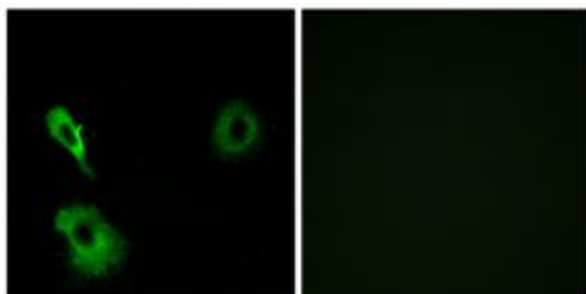


[View online »](#)

Product images:



Western blot analysis of extracts from Jurkat cells, using GRM7 antibody. The lane on the right is treated with the synthesized peptide.



Immunofluorescence analysis of A549 cells, using GRM7 antibody. The picture on the right is treated with the synthesized peptide.