

Product datasheet for **TA311805**

Dopamine Receptor D1 (DRD1) Rabbit Polyclonal Antibody

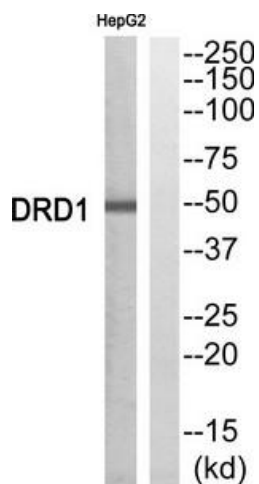
Product data:

Product Type:	Primary Antibodies
Applications:	WB
Recommended Dilution:	WB: 1:500~1:3000, ELISA: 1:10000
Reactivity:	Human, Mouse, Rat
Modifications:	Phospho-specific
Host:	Rabbit
Isotype:	IgG
Clonality:	Polyclonal
Immunogen:	The antiserum was produced against synthesized peptide derived from Internalof human DRD1.
Formulation:	Phosphate buffered saline (without Mg ²⁺ and Ca ²⁺), pH 7.4, 150mM NaCl, 0.02% sodium azide and 50% glycerol.
Concentration:	lot specific
Purification:	The antibody was affinity-purified from rabbit antiserum by affinity-chromatography using epitope-specific immunogen.
Conjugation:	Unconjugated
Storage:	Store at -20°C as received.
Stability:	Stable for 12 months from date of receipt.
Gene Name:	dopamine receptor D1
Database Link:	NP_000785 Entrez Gene 13488 Mouse Entrez Gene 24316 Rat Entrez Gene 1812 Human P21728
Synonyms:	DADR; DRD1A
Note:	DRD1 Antibody detects endogenous levels of total DRD1 protein.
Protein Families:	Druggable Genome, GPCR, Transmembrane
Protein Pathways:	Calcium signaling pathway, Gap junction, Neuroactive ligand-receptor interaction



[View online »](#)

Product images:



Western blot analysis of extracts from HepG2 cells, using DRD1 Antibody. The lane on the right is treated with the synthesized peptide.