

Product datasheet for **TA311804**

Cytochrome P450 2E1 (CYP2E1) Rabbit Polyclonal Antibody

Product data:

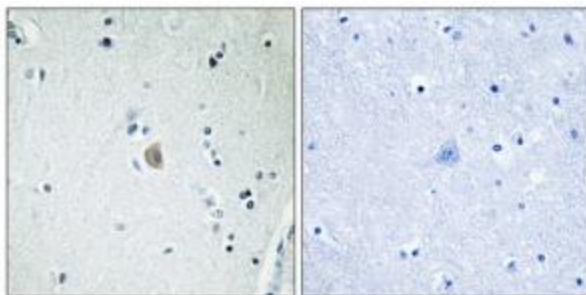
Product Type:	Primary Antibodies
Applications:	IF, IHC
Recommended Dilution:	WB: 1:500~1:3000, IHC: 1:50~1:100, IF: 1:100~1:500, ELISA: 1:1000
Reactivity:	Human, Mouse, Rat
Modifications:	Phospho-specific
Host:	Rabbit
Isotype:	IgG
Clonality:	Polyclonal
Immunogen:	The antiserum was produced against synthesized peptide derived from C-terminal of human Cytochrome P450 2E1.
Formulation:	Phosphate buffered saline (without Mg ²⁺ and Ca ²⁺), pH 7.4, 150mM NaCl, 0.02% sodium azide and 50% glycerol.
Concentration:	lot specific
Purification:	The antibody was affinity-purified from rabbit antiserum by affinity-chromatography using epitope-specific immunogen.
Conjugation:	Unconjugated
Storage:	Store at -20°C as received.
Stability:	Stable for 12 months from date of receipt.
Gene Name:	cytochrome P450 family 2 subfamily E member 1
Database Link:	NP_000764 Entrez Gene 13106 Mouse Entrez Gene 25086 Rat Entrez Gene 1571 Human P05181
Synonyms:	CPE1; CYP2E; P450-J; P450C2E
Note:	Cytochrome P450 2E1 antibody detects endogenous levels of total Cytochrome P450 2E1 protein.
Protein Families:	Druggable Genome, P450, Transmembrane



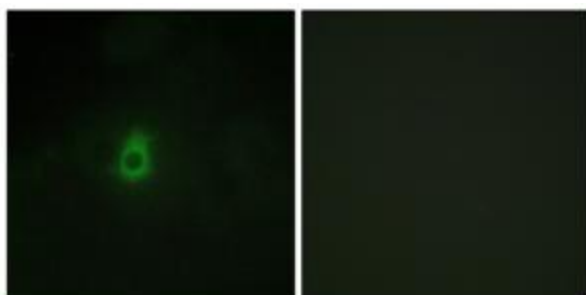
[View online »](#)

Protein Pathways: Arachidonic acid metabolism, Drug metabolism - cytochrome P450, Linoleic acid metabolism, Metabolic pathways, Metabolism of xenobiotics by cytochrome P450

Product images:



Immunohistochemistry analysis of paraffin-embedded human brain tissue, using Cytochrome P450 2E1 antibody. The picture on the right is treated with the synthesized peptide.



Immunofluorescence analysis of HepG2 cells, using Cytochrome P450 2E1 antibody. The picture on the right is treated with the synthesized peptide.