

Product datasheet for **TA311802**

Cytochrome P450 2C8 (CYP2C8) Rabbit Polyclonal Antibody

Product data:

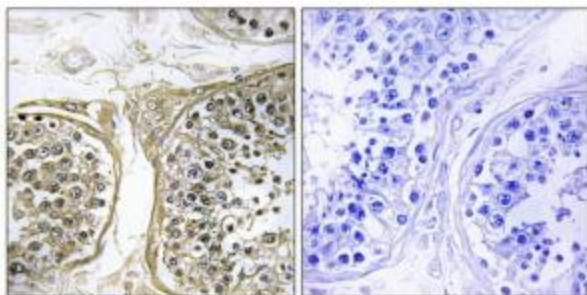
Product Type:	Primary Antibodies
Applications:	IHC
Recommended Dilution:	IHC: 1:50~1:100, ELISA: 1:20000
Reactivity:	Human
Modifications:	Phospho-specific
Host:	Rabbit
Isotype:	IgG
Clonality:	Polyclonal
Immunogen:	The antiserum was produced against synthesized peptide derived from internal of human Cytochrome P450 2C8.
Formulation:	Phosphate buffered saline (without Mg ²⁺ and Ca ²⁺), pH 7.4, 150mM NaCl, 0.02% sodium azide and 50% glycerol.
Concentration:	lot specific
Purification:	The antibody was affinity-purified from rabbit antiserum by affinity-chromatography using epitope-specific immunogen.
Conjugation:	Unconjugated
Storage:	Store at -20°C as received.
Stability:	Stable for 12 months from date of receipt.
Gene Name:	cytochrome P450 family 2 subfamily C member 8
Database Link:	NP_000761 Entrez Gene 1558 Human P10632
Synonyms:	CPC8; CYP11C8; MP-12; MP-20
Note:	Cytochrome P450 2C8 antibody detects endogenous levels of total Cytochrome P450 2C8 protein.
Protein Families:	Druggable Genome, P450, Transmembrane



[View online »](#)

Protein Pathways: Arachidonic acid metabolism, Drug metabolism - cytochrome P450, Linoleic acid metabolism, Metabolic pathways, Metabolism of xenobiotics by cytochrome P450, Retinol metabolism

Product images:



Immunohistochemistry analysis of paraffin-embedded human testis tissue, using Cytochrome P450 2C8 antibody. The picture on the right is treated with the synthesized peptide.