

## Product datasheet for **TA311800**

### Cytochrome P450 2B6 (CYP2B6) Rabbit Polyclonal Antibody

#### Product data:

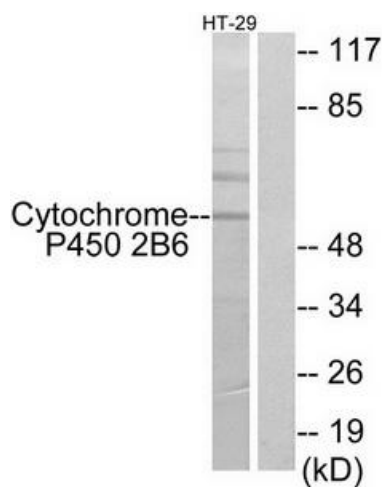
Product Type:	Primary Antibodies
Applications:	WB
Recommended Dilution:	WB: 1:500~1:3000, ELISA: 1:1000
Reactivity:	Human
Modifications:	Phospho-specific
Host:	Rabbit
Isotype:	IgG
Clonality:	Polyclonal
Immunogen:	The antiserum was produced against synthesized peptide derived from internal of human Cytochrome P450 2B6.
Formulation:	Phosphate buffered saline (without Mg <sup>2+</sup> and Ca <sup>2+</sup> ), pH 7.4, 150mM NaCl, 0.02% sodium azide and 50% glycerol.
Concentration:	lot specific
Purification:	The antibody was affinity-purified from rabbit antiserum by affinity-chromatography using epitope-specific immunogen.
Conjugation:	Unconjugated
Storage:	Store at -20°C as received.
Stability:	Stable for 12 months from date of receipt.
Gene Name:	cytochrome P450 family 2 subfamily B member 6
Database Link:	<a href="#">NP_000758</a> <a href="#">Entrez Gene 1555 Human P20813</a>
Synonyms:	CPB6; CYP2B; CYP2B7; CYP2B7P; CYP11B6; EFVM; IIB1; P450
Note:	Cytochrome P450 2B6 antibody detects endogenous levels of total Cytochrome P450 2B6 protein.
Protein Families:	Druggable Genome, P450



[View online »](#)

**Protein Pathways:** Arachidonic acid metabolism, Drug metabolism - cytochrome P450, Metabolic pathways, Metabolism of xenobiotics by cytochrome P450, Retinol metabolism

**Product images:**



Western blot analysis of extracts from HT-29 cells, using Cytochrome P450 2B6 antibody. The lane on the right is treated with the synthesized peptide.