

## Product datasheet for **TA311798**

### Vasopressin V1b receptor (AVPR1B) Rabbit Polyclonal Antibody

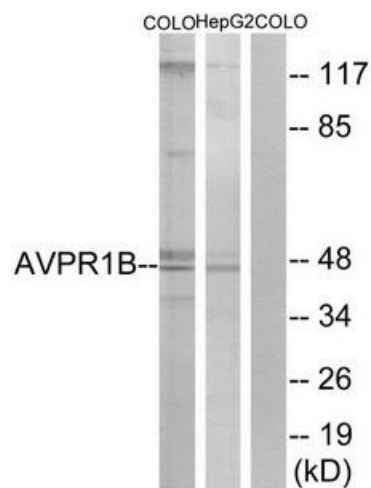
#### Product data:

Product Type:	Primary Antibodies
Applications:	WB
Recommended Dilution:	WB: 1:500~1:3000, ELISA: 1:20000
Reactivity:	Human
Modifications:	Phospho-specific
Host:	Rabbit
Isotype:	IgG
Clonality:	Polyclonal
Immunogen:	The antiserum was produced against synthesized peptide derived from internal of human AVPR1B.
Formulation:	Phosphate buffered saline (without Mg <sup>2+</sup> and Ca <sup>2+</sup> ), pH 7.4, 150mM NaCl, 0.02% sodium azide and 50% glycerol.
Concentration:	lot specific
Purification:	The antibody was affinity-purified from rabbit antiserum by affinity-chromatography using epitope-specific immunogen.
Conjugation:	Unconjugated
Storage:	Store at -20°C as received.
Stability:	Stable for 12 months from date of receipt.
Gene Name:	arginine vasopressin receptor 1B
Database Link:	<a href="#">NP_000698</a> <a href="#">Entrez Gene 553 Human P47901</a>
Synonyms:	AVPR3
Note:	AVPR1B antibody detects endogenous levels of total AVPR1B protein.
Protein Families:	Druggable Genome, GPCR, Transmembrane
Protein Pathways:	Calcium signaling pathway, Neuroactive ligand-receptor interaction, Vascular smooth muscle contraction



[View online »](#)

## Product images:



Western blot analysis of extracts from COLO cells and HepG2 cells, using AVPR1B antibody. The lane on the right is treated with the synthesized peptide.