

Product datasheet for **TA311793**

Adenosine Receptor A2a (ADORA2A) Rabbit Polyclonal Antibody

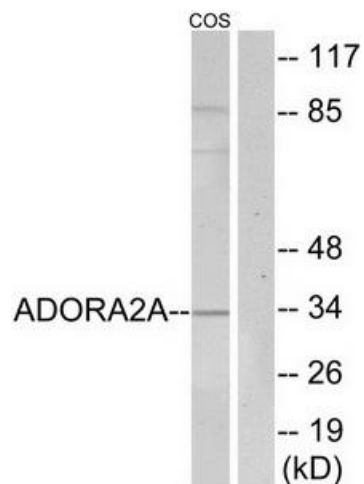
Product data:

Product Type:	Primary Antibodies
Applications:	IF, IHC, WB
Recommended Dilution:	WB: 1:500~1:3000, IHC: 1:50~1:100, IF: 1:100~1:500, ELISA: 1:1000
Reactivity:	Human
Modifications:	Phospho-specific
Host:	Rabbit
Isotype:	IgG
Clonality:	Polyclonal
Immunogen:	The antiserum was produced against synthesized peptide derived from internal of human ADORA2A.
Formulation:	Phosphate buffered saline (without Mg ²⁺ and Ca ²⁺), pH 7.4, 150mM NaCl, 0.02% sodium azide and 50% glycerol.
Concentration:	lot specific
Purification:	The antibody was affinity-purified from rabbit antiserum by affinity-chromatography using epitope-specific immunogen.
Conjugation:	Unconjugated
Storage:	Store at -20°C as received.
Stability:	Stable for 12 months from date of receipt.
Gene Name:	adenosine A2a receptor
Database Link:	NP_000666 Entrez Gene 135 Human P29274
Synonyms:	A2aR; ADORA2; RDC8
Note:	ADORA2A antibody detects endogenous levels of total ADORA2A protein.
Protein Families:	Druggable Genome, GPCR, Transmembrane
Protein Pathways:	Calcium signaling pathway, Neuroactive ligand-receptor interaction, Vascular smooth muscle contraction

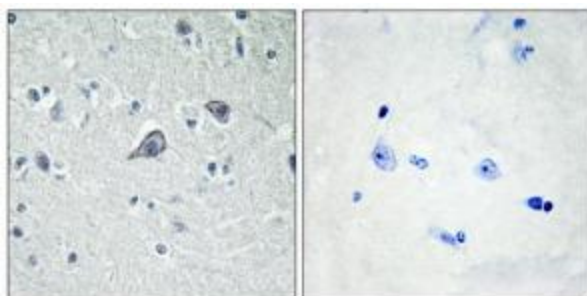


[View online »](#)

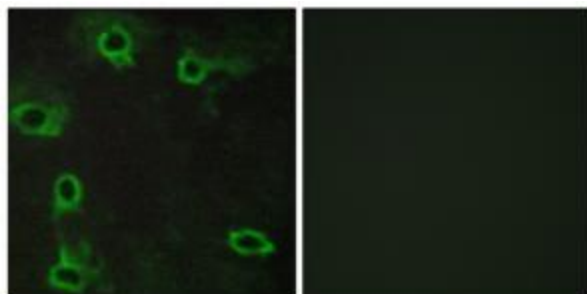
Product images:



Western blot analysis of extracts from COS7 cells, using ADORA2A antibody. The lane on the right is treated with the synthesized peptide.



Immunohistochemistry analysis of paraffin-embedded human brain tissue, using ADORA2A antibody. The picture on the right is treated with the synthesized peptide.



Immunofluorescence analysis of COS7 cells, using ADORA2A antibody. The picture on the right is treated with the synthesized peptide.