

Product datasheet for **TA311790**

CD44 Rabbit Polyclonal Antibody

Product data:

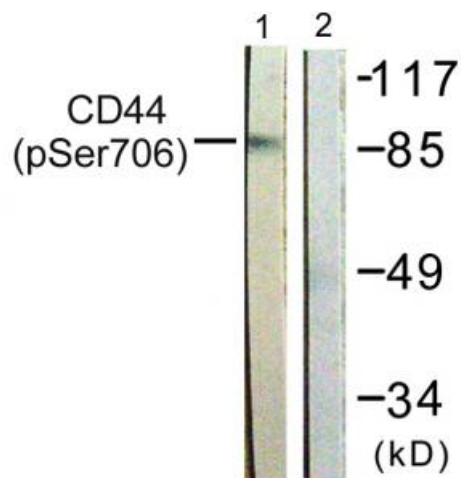
Product Type:	Primary Antibodies
Applications:	WB
Recommended Dilution:	WB: 1:500~1:3000, ELISA: 1:20000
Reactivity:	Human, Mouse
Modifications:	Phospho-specific
Host:	Rabbit
Isotype:	IgG
Clonality:	Polyclonal
Immunogen:	The antiserum was produced against synthesized phosphopeptide derived from human CD44 around the phosphorylation site of serine 706 (S-K-SP-Q-E).
Formulation:	Phosphate buffered saline (without Mg ²⁺ and Ca ²⁺), pH 7.4, 150mM NaCl, 0.02% sodium azide and 50% glycerol.
Concentration:	lot specific
Purification:	The antibody was affinity-purified from rabbit antiserum by affinity-chromatography using epitope-specific immunogen.
Conjugation:	Unconjugated
Storage:	Store at -20°C as received.
Stability:	Stable for 12 months from date of receipt.
Gene Name:	CD44 molecule (Indian blood group)
Database Link:	NP_000601 Entrez Gene 12505 Mouse Entrez Gene 960 Human P16070
Synonyms:	CDW44; CSPG8; ECMR-III; HCELL; HUTCH-I; IN; LHR; MC56; MDU2; MDU3; MIC4; Pgp1
Note:	CD44 (Phospho-Ser706) antibody detects endogenous levels of CD44 only when phosphorylated at serine 706.
Protein Families:	Adult stem cells, Cancer stem cells, Druggable Genome, Embryonic stem cells, ES Cell Differentiation/IPS, Stem cell relevant signaling - DSL/Notch pathway, Transmembrane



[View online »](#)

Protein Pathways: ECM-receptor interaction, Hematopoietic cell lineage

Product images:



Western blot analysis of extracts from NIH/3T3 cells, treated with PMA (250ng/ml, 5mins), using CD44 (Phospho-Ser706) antibody. The lane on the right is treated with the synthesized peptide.