

Product datasheet for **TA311784**

Factor X (F10) Rabbit Polyclonal Antibody

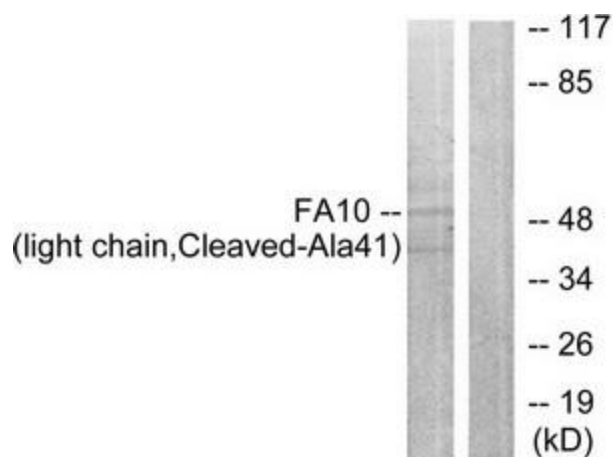
Product data:

| | |
|-----------------------|---|
| Product Type: | Primary Antibodies |
| Applications: | WB |
| Recommended Dilution: | WB: 1:500~1:3000, ELISA: 1:20000 |
| Reactivity: | Human |
| Host: | Rabbit |
| Isotype: | IgG |
| Clonality: | Polyclonal |
| Immunogen: | The antiserum was produced against synthesized peptide derived from human FA10. |
| Formulation: | Phosphate buffered saline (without Mg ²⁺ and Ca ²⁺), pH 7.4, 150mM NaCl, 0.02% sodium azide and 50% glycerol. |
| Concentration: | lot specific |
| Purification: | The antibody was affinity-purified from rabbit antiserum by affinity-chromatography using epitope-specific immunogen. |
| Conjugation: | Unconjugated |
| Storage: | Store at -20°C as received. |
| Stability: | Stable for 12 months from date of receipt. |
| Gene Name: | coagulation factor X |
| Database Link: | NP_000495 Entrez Gene 2159 Human P00742 |
| Synonyms: | FX; FXA |
| Note: | FA10 (light chain, Cleaved-Ala41) antibody detects endogenous levels of fragment of activated FA10 resulting from cleavage adjacent to Ala41. |
| Protein Families: | Druggable Genome, Protease, Transmembrane |
| Protein Pathways: | Complement and coagulation cascades |



[View online »](#)

Product images:



Western blot analysis of extracts from A549 cells, treated with etoposide (24uM, 24hours), using FA10 (light chain, Cleaved-Ala41) antibody. The lane on the right is treated with the synthesized peptide.