

Product datasheet for **TA311783**

Factor X (F10) Rabbit Polyclonal Antibody

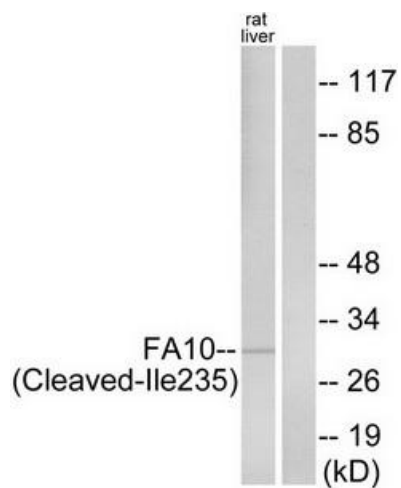
Product data:

Product Type:	Primary Antibodies
Applications:	WB
Recommended Dilution:	WB: 1:500~1:3000, ELISA: 1:20000
Reactivity:	Human, Mouse, Rat
Host:	Rabbit
Isotype:	IgG
Clonality:	Polyclonal
Immunogen:	The antiserum was produced against synthesized peptide derived from human FA10.
Formulation:	Phosphate buffered saline (without Mg ²⁺ and Ca ²⁺), pH 7.4, 150mM NaCl, 0.02% sodium azide and 50% glycerol.
Concentration:	lot specific
Purification:	The antibody was affinity-purified from rabbit antiserum by affinity-chromatography using epitope-specific immunogen.
Conjugation:	Unconjugated
Storage:	Store at -20°C as received.
Stability:	Stable for 12 months from date of receipt.
Gene Name:	coagulation factor X
Database Link:	NP_000495 Entrez Gene 14058 Mouse Entrez Gene 29243 Rat Entrez Gene 2159 Human P00742
Synonyms:	FX; FXA
Note:	FA10 (activated heavy chain, Cleaved-Ile235) antibody detects endogenous levels of fragment of activated FA10 resulting from cleavage adjacent to Ile235.
Protein Families:	Druggable Genome, Protease, Transmembrane
Protein Pathways:	Complement and coagulation cascades



[View online »](#)

Product images:



Western blot analysis of extracts from rat liver cells, using FA10 (activated heavy chain, Cleaved-Ile235) antibody. The lane on the right is treated with the synthesized peptide.