

Product datasheet for **TA311782**

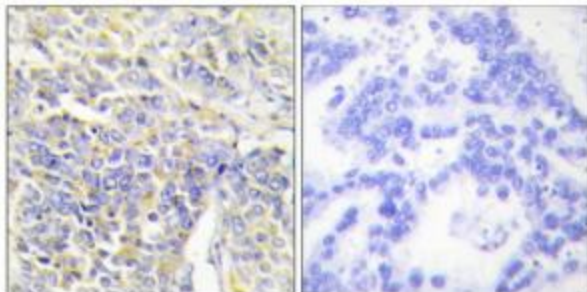
Adenylate Kinase 1 (AK1) Rabbit Polyclonal Antibody

Product data:

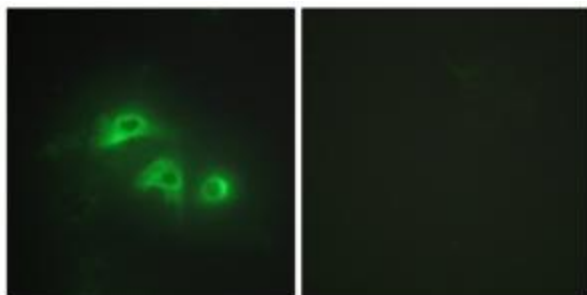
Product Type:	Primary Antibodies
Applications:	IF, IHC
Recommended Dilution:	IHC: 1:50~1:100, IF: 1:100~1:500, ELISA: 1:5000
Reactivity:	Human, Mouse, Rat
Host:	Rabbit
Isotype:	IgG
Clonality:	Polyclonal
Immunogen:	The antiserum was produced against synthesized peptide derived from internal of human KAD1.
Formulation:	Phosphate buffered saline (without Mg ²⁺ and Ca ²⁺), pH 7.4, 150mM NaCl, 0.02% sodium azide and 50% glycerol.
Concentration:	lot specific
Purification:	The antibody was affinity-purified from rabbit antiserum by affinity-chromatography using epitope-specific immunogen.
Conjugation:	Unconjugated
Storage:	Store at -20°C as received.
Stability:	Stable for 12 months from date of receipt.
Gene Name:	adenylate kinase 1
Database Link:	NP_000467 Entrez Gene 11636 Mouse Entrez Gene 24183 Rat Entrez Gene 203 Human P00568
Synonyms:	HTL-S-58j
Note:	KAD1 antibody detects endogenous levels of total KAD1 protein.
Protein Families:	Druggable Genome
Protein Pathways:	Metabolic pathways, Purine metabolism



[View online »](#)

Product images:

Immunohistochemistry analysis of paraffin-embedded human lung carcinoma tissue, using KAD1 antibody. The picture on the right is treated with the synthesized peptide.



Immunofluorescence analysis of HepG2 cells, using KAD1 antibody. The picture on the right is treated with the synthesized peptide.