

Product datasheet for TA311781

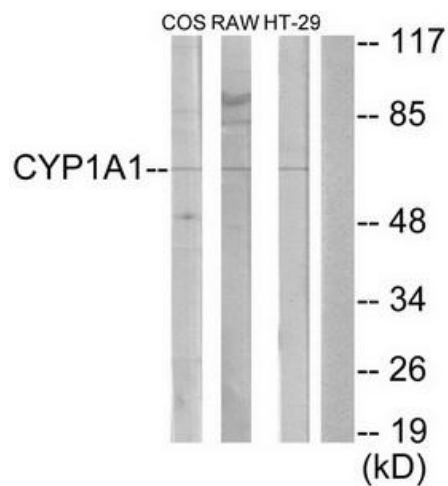
CYP1A1 Rabbit Polyclonal Antibody

Product data:

Product Type:	Primary Antibodies
Applications:	WB
Recommended Dilution:	WB: 1:500~1:3000, ELISA: 1:20000
Reactivity:	Human, Mouse, Rat
Host:	Rabbit
Isotype:	IgG
Clonality:	Polyclonal
Immunogen:	The antiserum was produced against synthesized peptide derived from internal of human Cytochrome P450 1A1/2.
Formulation:	Phosphate buffered saline (without Mg ²⁺ and Ca ²⁺), pH 7.4, 150mM NaCl, 0.02% sodium azide and 50% glycerol.
Concentration:	lot specific
Purification:	The antibody was affinity-purified from rabbit antiserum by affinity-chromatography using epitope-specific immunogen.
Conjugation:	Unconjugated
Storage:	Store at -20°C as received.
Stability:	Stable for 12 months from date of receipt.
Gene Name:	cytochrome P450 family 1 subfamily A member 1
Database Link:	NP_000490 Entrez Gene 13076 Mouse Entrez Gene 24296 Rat Entrez Gene 1543 Human P04798
Synonyms:	AHH; AHRR; CP11; CYP1; CYPIA1; P1-450; P450-C; P450DX
Note:	Cytochrome P450 1A1/2 antibody detects endogenous levels of total Cytochrome P450 1A1/2 protein.
Protein Families:	Druggable Genome, P450, Transmembrane
Protein Pathways:	Metabolism of xenobiotics by cytochrome P450, Retinol metabolism, Tryptophan metabolism


[View online »](#)

Product images:



Western blot analysis of extracts from COS-7 cells, RAW264.7 cells and HT-29 cells, using Cytochrome P450 1A1/2 antibody. The lane on the right is treated with the synthesized peptide.