

Product datasheet for **TA311780**

Alkaline Phosphatase (ALPL) Rabbit Polyclonal Antibody

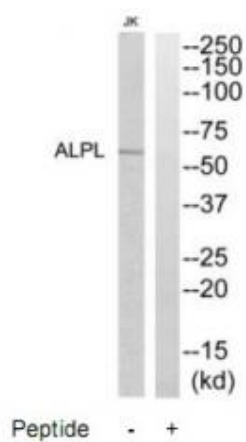
Product data:

Product Type:	Primary Antibodies
Applications:	WB
Recommended Dilution:	WB: 1:500~1:3000, ELISA: 1:40000
Reactivity:	Mouse, Human, Rat
Modifications:	Phospho-specific
Host:	Rabbit
Isotype:	IgG
Clonality:	Polyclonal
Immunogen:	The antiserum was produced against synthesized peptide derived from internal of human ALPL.
Formulation:	Phosphate buffered saline (without Mg ²⁺ and Ca ²⁺), pH 7.4, 150mM NaCl, 0.02% sodium azide and 50% glycerol.
Concentration:	lot specific
Purification:	The antibody was affinity-purified from rabbit antiserum by affinity-chromatography using epitope-specific immunogen.
Conjugation:	Unconjugated
Storage:	Store at -20°C as received.
Stability:	Stable for 12 months from date of receipt.
Gene Name:	alkaline phosphatase, liver/bone/kidney
Database Link:	NP_000469 Entrez Gene 11647 Mouse Entrez Gene 25586 Rat Entrez Gene 249 Human P05186
Synonyms:	AP-TNAP; APTNAP; HOPS; TNAP; TNSALP
Note:	ALPL antibody detects endogenous levels of total ALPL protein.
Protein Families:	Druggable Genome
Protein Pathways:	Folate biosynthesis, Metabolic pathways



[View online »](#)

Product images:



Western blot analysis of extracts from Jurkat cells, using ALPL antibody. The lane on the right is treated with the synthesized peptide.