

Product datasheet for **TA311778**

Thyroid Hormone Receptor beta (THRB) Rabbit Polyclonal Antibody

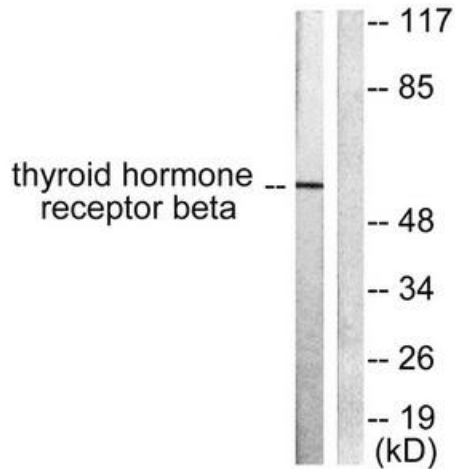
Product data:

Product Type:	Primary Antibodies
Applications:	IHC, WB
Recommended Dilution:	WB: 1:500~1:3000, IHC: 1:50~1:100, ELISA: 1:5000
Reactivity:	Human, Mouse, Rat
Modifications:	Phospho-specific
Host:	Rabbit
Isotype:	IgG
Clonality:	Polyclonal
Immunogen:	The antiserum was produced against synthesized peptide derived from human Thyroid Hormone Receptor β antibody.
Formulation:	Phosphate buffered saline (without Mg ²⁺ and Ca ²⁺), pH 7.4, 150mM NaCl, 0.02% sodium azide and 50% glycerol.
Concentration:	lot specific
Purification:	The antibody was affinity-purified from rabbit antiserum by affinity-chromatography using epitope-specific immunogen.
Conjugation:	Unconjugated
Storage:	Store at -20°C as received.
Stability:	Stable for 12 months from date of receipt.
Gene Name:	thyroid hormone receptor beta
Database Link:	NP_000452 Entrez Gene 21834 Mouse Entrez Gene 24831 Rat Entrez Gene 7068 Human P10828
Synonyms:	C-ERBA-2; C-ERBA-BETA; ERBA2; GRTH; NR1A2; PRTH; THR1; THRB1; THRB2
Note:	Thyroid Hormone Receptor . antibody detects endogenous levels of total Thyroid Hormone Receptor . protein.
Protein Families:	Druggable Genome, Nuclear Hormone Receptor, Transcription Factors
Protein Pathways:	Neuroactive ligand-receptor interaction

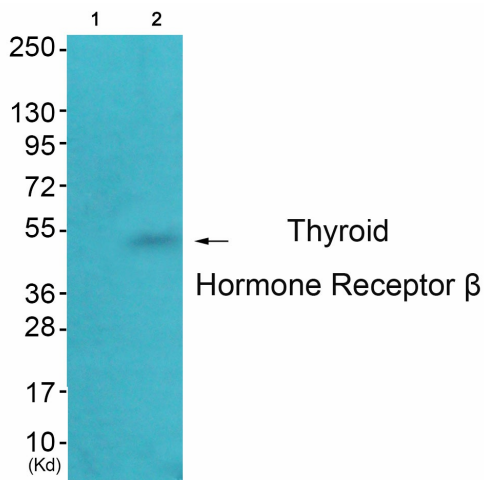


[View online »](#)

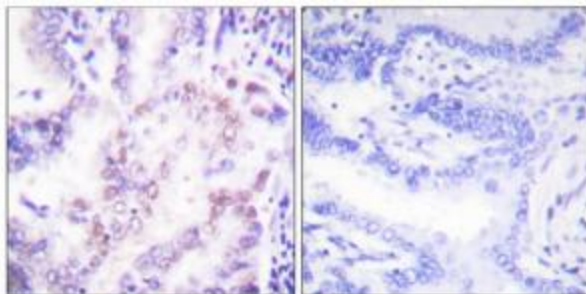
Product images:



Western blot analysis of extracts from LOVO cells, using Thyroid Hormone Receptor β antibody (#TA311778). The lane on the right is treated with the synthesized peptide.



Western blot analysis of extracts from HepG2 cells (Lane 2), using Thyroid Hormone Receptor β Antibody. The lane on the left is treated with synthesized peptide.



Immunohistochemical analysis of paraffin-embedded human lung carcinoma tissue using Thyroid Hormone Receptor β antibody (#TA311778). The picture on the right is treated with the synthesized peptide.