

Product datasheet for **TA311776**

Cytokeratin 5 (KRT5) Rabbit Polyclonal Antibody

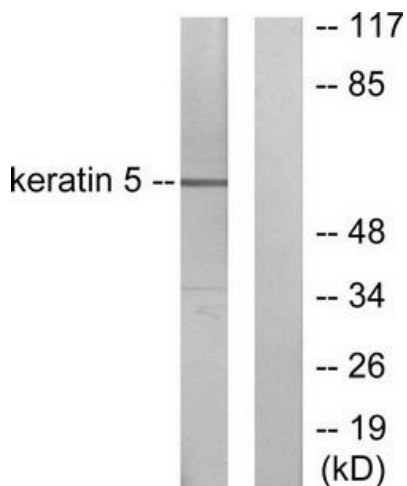
Product data:

Product Type:	Primary Antibodies
Applications:	IHC, WB
Recommended Dilution:	WB: 1:500~1:3000, IHC: 1:50~1:100, ELISA: 1:10000
Reactivity:	Human, Mouse, Rat
Modifications:	Phospho-specific
Host:	Rabbit
Isotype:	IgG
Clonality:	Polyclonal
Immunogen:	The antiserum was produced against synthesized peptide derived from human Keratin 5.
Formulation:	Phosphate buffered saline (without Mg ²⁺ and Ca ²⁺), pH 7.4, 150mM NaCl, 0.02% sodium azide and 50% glycerol.
Concentration:	lot specific
Purification:	The antibody was affinity-purified from rabbit antiserum by affinity-chromatography using epitope-specific immunogen.
Conjugation:	Unconjugated
Storage:	Store at -20°C as received.
Stability:	Stable for 12 months from date of receipt.
Gene Name:	keratin 5
Database Link:	NP_000415 Entrez Gene 110308 MouseEntrez Gene 369017 RatEntrez Gene 3852 Human P13647
Synonyms:	CK5; DDD; DDD1; EBS2; K5; KRT5A
Note:	Keratin 5 antibody detects endogenous levels of total Keratin 5 protein.

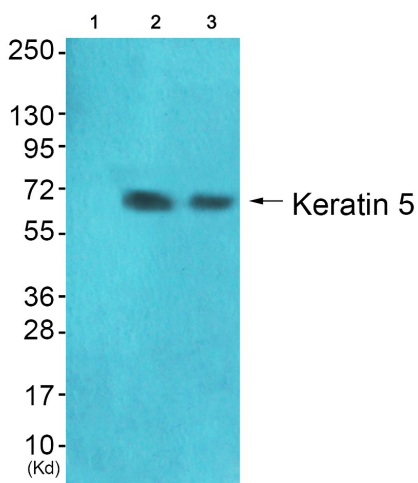


[View online »](#)

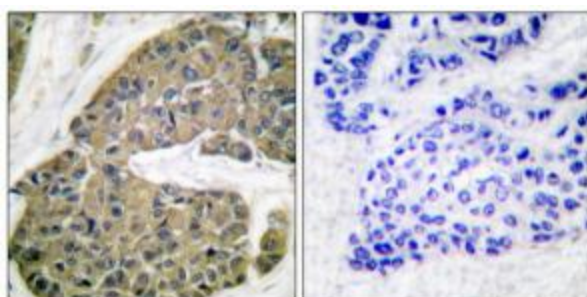
Product images:



Western blot analysis of extracts from HepG2 cells, using Keratin 5 antibody (#TA311776). The lane on the right is treated with the synthesized peptide.



Western blot analysis of extracts from 293 cells (Lane 2) and HepG2 cells (Lane 3), using Keratin 5 Antibody. The lane on the left is treated with synthesized peptide.



Immunohistochemical analysis of paraffin-embedded human breast carcinoma tissue using Keratin 5 antibody (#TA311776). The picture on the right is treated with the synthesized peptide.