

Product datasheet for **TA311775**

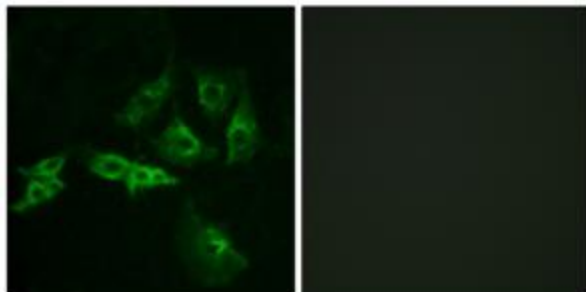
GNRHR Rabbit Polyclonal Antibody

Product data:

Product Type:	Primary Antibodies
Applications:	IF
Recommended Dilution:	IF: 1:100~1:500, ELISA: 1:1000
Reactivity:	Human, Mouse
Modifications:	Phospho-specific
Host:	Rabbit
Isotype:	IgG
Clonality:	Polyclonal
Immunogen:	The antiserum was produced against synthesized peptide derived from internal of human GNRHR.
Formulation:	Phosphate buffered saline (without Mg ²⁺ and Ca ²⁺), pH 7.4, 150mM NaCl, 0.02% sodium azide and 50% glycerol.
Concentration:	lot specific
Purification:	The antibody was affinity-purified from rabbit antiserum by affinity-chromatography using epitope-specific immunogen.
Conjugation:	Unconjugated
Storage:	Store at -20°C as received.
Stability:	Stable for 12 months from date of receipt.
Gene Name:	gonadotropin releasing hormone receptor
Database Link:	NP_000397 Entrez Gene 14715 Mouse Entrez Gene 2798 Human P30968
Synonyms:	GNRHR1; GRHR; HH7; LHRHR; LRHR
Note:	GNRHR antibody detects endogenous levels of total GNRHR protein.
Protein Families:	Druggable Genome, GPCR, Transmembrane
Protein Pathways:	GnRH signaling pathway, Neuroactive ligand-receptor interaction



[View online »](#)

Product images:

Immunofluorescence analysis of A549 cells, using GNRHR antibody. The picture on the right is treated with the synthesized peptide.