

Product datasheet for **TA311768**

Protein C (PROC) Rabbit Polyclonal Antibody

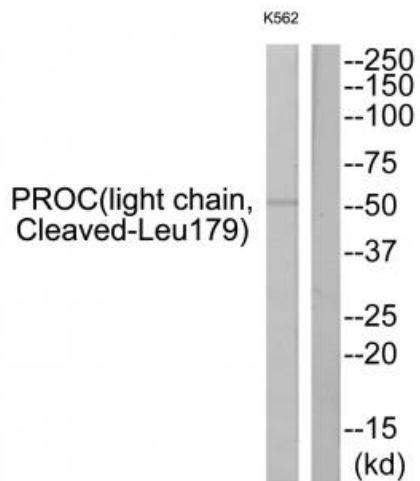
Product data:

Product Type:	Primary Antibodies
Applications:	WB
Recommended Dilution:	WB: 1:500~1:3000, ELISA: 1:20000
Reactivity:	Human
Host:	Rabbit
Isotype:	IgG
Clonality:	Polyclonal
Immunogen:	The antiserum was produced against synthesized peptide derived from human PROC.
Formulation:	Phosphate buffered saline (without Mg ²⁺ and Ca ²⁺), pH 7.4, 150mM NaCl, 0.02% sodium azide and 50% glycerol.
Concentration:	lot specific
Purification:	The antibody was affinity-purified from rabbit antiserum by affinity-chromatography using epitope-specific immunogen.
Conjugation:	Unconjugated
Storage:	Store at -20°C as received.
Stability:	Stable for 12 months from date of receipt.
Gene Name:	protein C, inactivator of coagulation factors Va and VIIIa
Database Link:	NP_000303 Entrez Gene 5624 Human P04070
Synonyms:	APC; PC; PROC1; THPH3; THPH4
Note:	PROC (light chain, Cleaved-Leu179) antibody detects endogenous levels of fragment of activated PROC resulting from cleavage adjacent to Leu179.
Protein Families:	Druggable Genome, Protease
Protein Pathways:	Complement and coagulation cascades



[View online »](#)

Product images:



Western blot analysis of extracts from K562 cells, using PROC (light chain, Cleaved-Leu179) antibody. The lane on the right is treated with the synthesized peptide.