

Product datasheet for **TA311767**

PDHA1 Rabbit Polyclonal Antibody

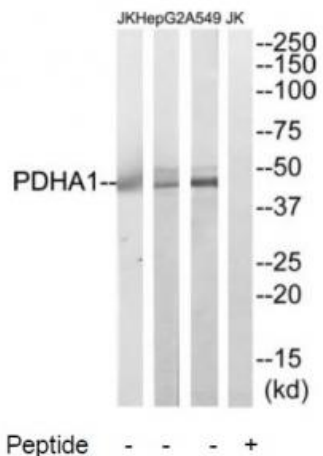
Product data:

Product Type:	Primary Antibodies
Applications:	IHC, WB
Recommended Dilution:	WB: 1:500~1:3000, IHC: 1:50~1:100, ELISA: 1:40000
Reactivity:	Mouse, Human, Rat
Host:	Rabbit
Isotype:	IgG
Clonality:	Polyclonal
Immunogen:	The antiserum was produced against synthesized peptide derived from internal of human PDHA1.
Formulation:	Phosphate buffered saline (without Mg ²⁺ and Ca ²⁺), pH 7.4, 150mM NaCl, 0.02% sodium azide and 50% glycerol.
Concentration:	lot specific
Purification:	The antibody was affinity-purified from rabbit antiserum by affinity-chromatography using epitope-specific immunogen.
Conjugation:	Unconjugated
Storage:	Store at -20°C as received.
Stability:	Stable for 12 months from date of receipt.
Gene Name:	pyruvate dehydrogenase (lipoamide) alpha 1
Database Link:	NP_000275 Entrez Gene 18597 Mouse Entrez Gene 29554 Rat Entrez Gene 5160 Human P08559
Synonyms:	PDHA; PDHAD; PDHCE1A; PHE1A
Note:	PDHA1 antibody detects endogenous levels of total PDHA1 protein.
Protein Families:	Druggable Genome
Protein Pathways:	Butanoate metabolism, Citrate cycle (TCA cycle), Glycolysis / Gluconeogenesis, Metabolic pathways, Pyruvate metabolism, Valine, leucine and isoleucine biosynthesis

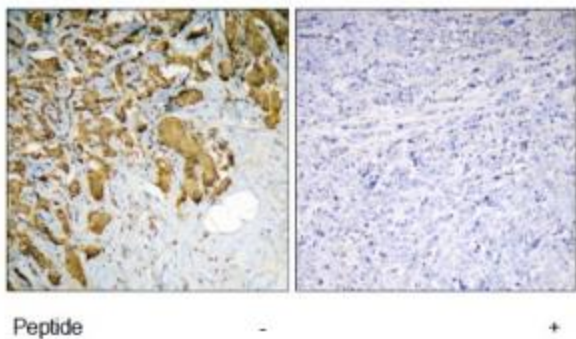


[View online »](#)

Product images:



Western blot analysis of extracts from A549, HepG2 and Jurkat cells, using PDHA1 antibody. The lane on the right is treated with the synthesized peptide.



Immunohistochemistry analysis of paraffin-embedded human breast carcinoma tissue using PDHA1 antibody. The picture on the right is treated with the synthesized peptide.