

Product datasheet for **TA311763**

NCF1 Rabbit Polyclonal Antibody

Product data:

Product Type:	Primary Antibodies
Applications:	IF, WB
Recommended Dilution:	WB: 1:500~1:3000, IF: 1:100~1:500, ELISA: 1:20000
Reactivity:	Human
Modifications:	Phospho-specific
Host:	Rabbit
Isotype:	IgG
Clonality:	Polyclonal
Immunogen:	The antiserum was produced against synthesized non-phosphopeptide derived from human Neutrophil Cytosol Factor 1 around the phosphorylation site of serine 304 (R-S-SP-I-R)
Formulation:	Phosphate buffered saline (without Mg ²⁺ and Ca ²⁺), pH 7.4, 150mM NaCl, 0.02% sodium azide and 50% glycerol.
Concentration:	lot specific
Purification:	The antibody was affinity-purified from rabbit antiserum by affinity-chromatography using epitope-specific immunogen.
Conjugation:	Unconjugated
Storage:	Store at -20°C as received.
Stability:	Stable for 12 months from date of receipt.
Gene Name:	neutrophil cytosolic factor 1
Database Link:	NP_000256 Entrez Gene 653361 Human P14598
Synonyms:	NCF1A; NOXO2; p47phox; SH3PXD1A
Note:	Neutrophil Cytosol Factor 1 (Ab-304) antibody detects endogenous levels of total Neutrophil Cytosol Factor 1 protein.

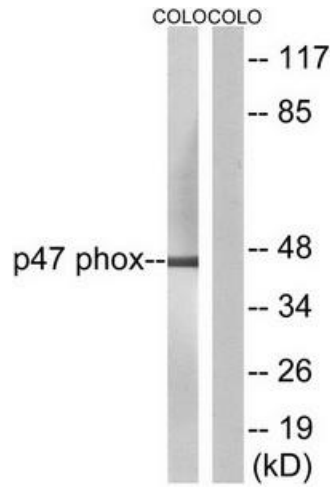


[View online »](#)

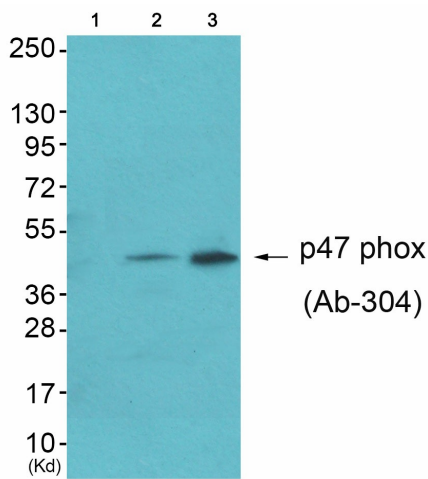
Protein Pathways:

Chemokine signaling pathway, Fc gamma R-mediated phagocytosis, Leukocyte transendothelial migration, Pathogenic Escherichia coli infection, Regulation of actin cytoskeleton

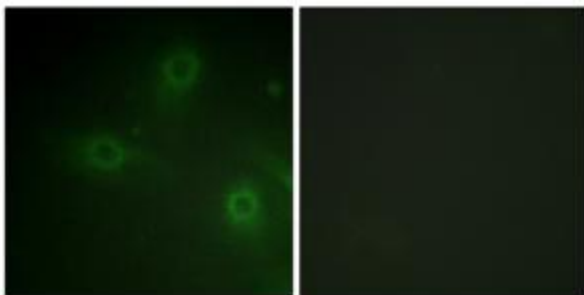
Product images:



Western blot analysis of extracts from COS7 cells, treated with UV (15mins), using Neutrophil Cytosol Factor 1 (Ab-304) antibody. The lane on the right is treated with the synthesized peptide.



Western blot analysis of extracts from HepG2 cells (Lane 2) and Jurket cells (Lane 3), using Neutrophil Cytosol Factor 1 (Ab-304) Antibody. The lane on the left is treated with synthesized peptide.



Immunofluorescence analysis of HeLa cells, using Neutrophil Cytosol Factor 1 (Ab-304) antibody. The picture on the right is treated with the synthesized peptide.