

Product datasheet for **TA311758**

NF2 Rabbit Polyclonal Antibody

Product data:

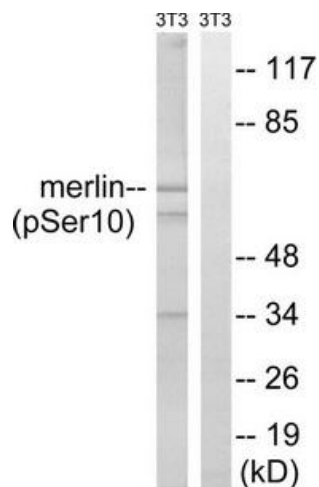
Product Type:	Primary Antibodies
Applications:	IHC, WB
Recommended Dilution:	WB: 1:500~1:3000, IHC: 1:50~1:100, ELISA: 1:1000
Reactivity:	Human, Mouse, Rat
Modifications:	Phospho-specific
Host:	Rabbit
Isotype:	IgG
Clonality:	Polyclonal
Immunogen:	The antiserum was produced against synthesized phosphopeptide derived from human Merlin around the phosphorylation site of serine 10 (R-M-SP-F-S).
Formulation:	Phosphate buffered saline (without Mg ²⁺ and Ca ²⁺), pH 7.4, 150mM NaCl, 0.02% sodium azide and 50% glycerol.
Concentration:	lot specific
Purification:	The antibody was affinity-purified from rabbit antiserum by affinity-chromatography using epitope-specific immunogen.
Conjugation:	Unconjugated
Storage:	Store at -20°C as received.
Stability:	Stable for 12 months from date of receipt.
Gene Name:	neurofibromin 2 (merlin)
Database Link:	NP_861973 Entrez Gene 18016 Mouse Entrez Gene 25744 Rat Entrez Gene 4771 Human P35240
Synonyms:	ACN; BANF; Merlin; merlin; moesin-ezrin-radixin like; moesin-ezrin-radixin-like protein; neurofibromin 2; neurofibromin 2 (bilateral acoustic neuroma); neurofibromin 2 (merlin); SCH; schwannomerlin; schwannomin
Note:	Merlin (Phospho-Ser10) antibody detects endogenous levels of Merlin only when phosphorylated at serine 10.



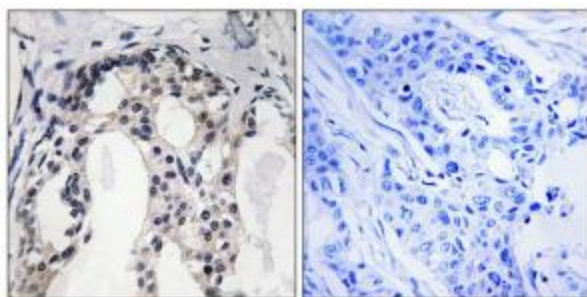
[View online »](#)

Protein Families: Druggable Genome

Product images:



Western blot analysis of extracts from 3T3 cells, treated with IFN (2500U/ml, 30mins), using Merlin (Phospho-Ser10) antibody. The lane on the right is treated with the synthesized peptide.



Immunohistochemistry analysis of paraffin-embedded human breast carcinoma tissue using Merlin (Phospho-Ser10) antibody. The picture on the right is treated with the synthesized peptide.