

## Product datasheet for **TA311754**

### Myosin light chain 3 (MYL3) Rabbit Polyclonal Antibody

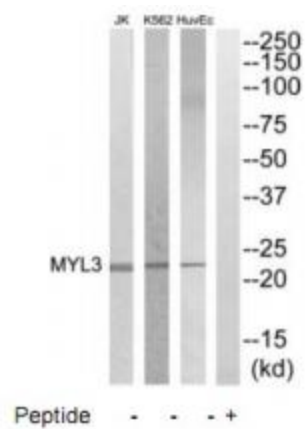
#### Product data:

Product Type:	Primary Antibodies
Applications:	WB
Recommended Dilution:	WB: 1:500~1:3000, ELISA: 1:20000
Reactivity:	Human
Host:	Rabbit
Isotype:	IgG
Clonality:	Polyclonal
Immunogen:	The antiserum was produced against synthesized peptide derived from internal of human MYL3.
Formulation:	Phosphate buffered saline (without Mg <sup>2+</sup> and Ca <sup>2+</sup> ), pH 7.4, 150mM NaCl, 0.02% sodium azide and 50% glycerol.
Concentration:	lot specific
Purification:	The antibody was affinity-purified from rabbit antiserum by affinity-chromatography using epitope-specific immunogen.
Conjugation:	Unconjugated
Storage:	Store at -20°C as received.
Stability:	Stable for 12 months from date of receipt.
Gene Name:	myosin light chain 3
Database Link:	<a href="#">NP_000249</a> <a href="#">Entrez Gene 4634 Human</a> <a href="#">P08590</a>
Synonyms:	CMH8; MLC1SB; MLC1V; VLC1
Note:	MYL3 antibody detects endogenous levels of total MYL3 protein.
Protein Families:	Druggable Genome
Protein Pathways:	Cardiac muscle contraction, Dilated cardiomyopathy, Hypertrophic cardiomyopathy (HCM)



[View online »](#)

## Product images:



Western blot analysis of extracts from HuvEC, K562 and Jurkat cells, using MYL3 antibody. The lane on the right is treated with the synthesized peptide.