

Product datasheet for **TA311753**

MLH1 Rabbit Polyclonal Antibody

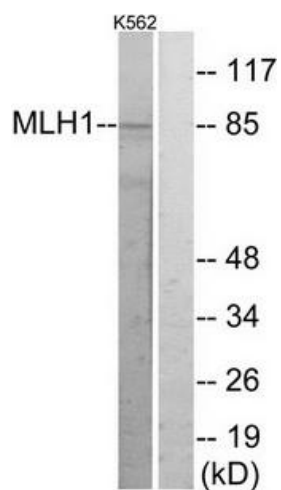
Product data:

Product Type:	Primary Antibodies
Applications:	WB
Recommended Dilution:	WB: 1:500~1:3000, ELISA: 1:20000
Reactivity:	Human, Mouse, Rat
Host:	Rabbit
Isotype:	IgG
Clonality:	Polyclonal
Immunogen:	The antiserum was produced against synthesized peptide derived from internal of human MLH1.
Formulation:	Phosphate buffered saline (without Mg ²⁺ and Ca ²⁺), pH 7.4, 150mM NaCl, 0.02% sodium azide and 50% glycerol.
Concentration:	lot specific
Purification:	The antibody was affinity-purified from rabbit antiserum by affinity-chromatography using epitope-specific immunogen.
Conjugation:	Unconjugated
Storage:	Store at -20°C as received.
Stability:	Stable for 12 months from date of receipt.
Gene Name:	mutL homolog 1
Database Link:	NP_000240 Entrez Gene 17350 Mouse Entrez Gene 81685 Rat Entrez Gene 4292 Human P40692
Synonyms:	COCA2; FCC2; hMLH1; HNPCC; HNPCC2
Note:	MLH1 antibody detects endogenous levels of total MLH1 protein.
Protein Families:	Druggable Genome
Protein Pathways:	Colorectal cancer, Endometrial cancer, Mismatch repair, Pathways in cancer



[View online »](#)

Product images:



Western blot analysis of extracts from K562 cells, using MLH1 antibody. The lane on the right is treated with the synthesized peptide.