

Product datasheet for **TA311742**

Cytokeratin 18 (KRT18) Rabbit Polyclonal Antibody

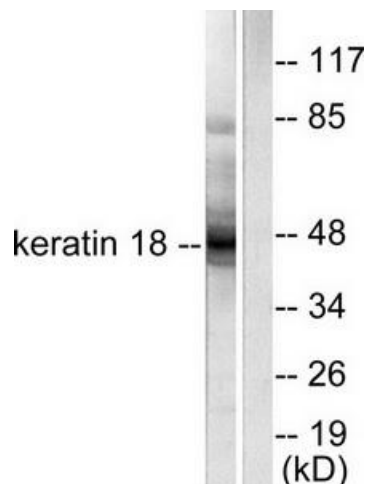
Product data:

Product Type:	Primary Antibodies
Applications:	IF, IHC, WB
Recommended Dilution:	WB: 1:500~1:3000, IHC: 1:50~1:100, IF: 1:100~1:500, ELISA: 1:10000
Reactivity:	Human
Modifications:	Phospho-specific
Host:	Rabbit
Isotype:	IgG
Clonality:	Polyclonal
Immunogen:	The antiserum was produced against synthesized peptide derived from human Keratin 18.
Formulation:	Phosphate buffered saline (without Mg ²⁺ and Ca ²⁺), pH 7.4, 150mM NaCl, 0.02% sodium azide and 50% glycerol.
Concentration:	lot specific
Purification:	The antibody was affinity-purified from rabbit antiserum by affinity-chromatography using epitope-specific immunogen.
Conjugation:	Unconjugated
Storage:	Store at -20°C as received.
Stability:	Stable for 12 months from date of receipt.
Gene Name:	keratin 18
Database Link:	NP_000215 Entrez Gene 3875 Human P05783
Synonyms:	CYK18; K18
Note:	Keratin 18 antibody detects endogenous levels of total Keratin 18 protein.
Protein Pathways:	Pathogenic Escherichia coli infection

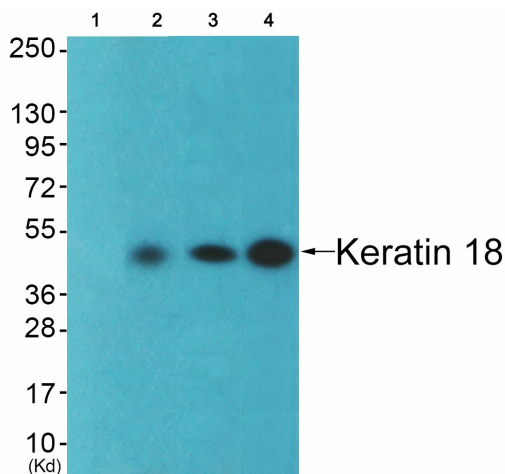


[View online »](#)

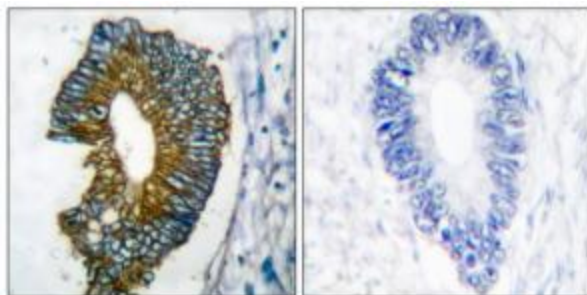
Product images:



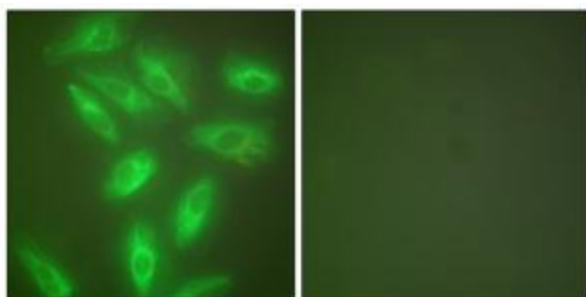
Western blot analysis of extracts from HeLa cells, using Keratin 18 antibody (#TA311742). The lane on the right is treated with the synthesized peptide.



Western blot analysis of extracts from 293 cells (Lane 2), CoLo cells (Lane 3) and HepG2 cells (Lane 4), using Keratin 18 Antibody. The lane on the left is treated with synthesized peptide.



Immunohistochemical analysis of paraffin-embedded human lung carcinoma tissue using Keratin 18 antibody (#TA311742). The picture on the right is treated with the synthesized peptide.



Immunofluorescence analysis of HeLa cells, using Keratin 18 antibody (#TA311742). The picture on the right is treated with the synthesized peptide.