

## Product datasheet for **TA311739**

### Integrin alpha 6 (ITGA6) Rabbit Polyclonal Antibody

#### Product data:

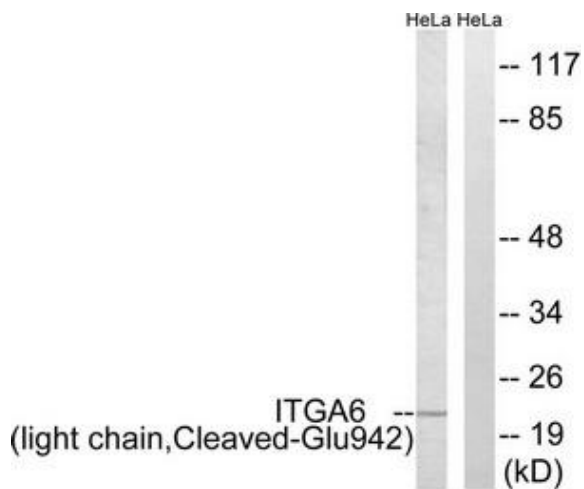
Product Type:	Primary Antibodies
Applications:	WB
Recommended Dilution:	WB: 1:500~1:3000, ELISA: 1:10000
Reactivity:	Human
Modifications:	Phospho-specific
Host:	Rabbit
Isotype:	IgG
Clonality:	Polyclonal
Immunogen:	The antiserum was produced against synthesized peptide derived from human ITGA6.
Formulation:	Phosphate buffered saline (without Mg <sup>2+</sup> and Ca <sup>2+</sup> ), pH 7.4, 150mM NaCl, 0.02% sodium azide and 50% glycerol.
Concentration:	lot specific
Purification:	The antibody was affinity-purified from rabbit antiserum by affinity-chromatography using epitope-specific immunogen.
Conjugation:	Unconjugated
Storage:	Store at -20°C as received.
Stability:	Stable for 12 months from date of receipt.
Gene Name:	integrin subunit alpha 6
Database Link:	<a href="#">NP_000201</a> <a href="#">Entrez Gene 3655 Human</a> <a href="#">P23229</a>
Synonyms:	CD49f; ITGA6B; VLA-6
Note:	ITGA6 (light chain, Cleaved-Glu942) antibody detects endogenous levels of fragment of activated ITGA6 resulting from cleavage adjacent to Glu942.
Protein Families:	Druggable Genome, ES Cell Differentiation/IPS, Transmembrane



[View online »](#)

**Protein Pathways:** Arrhythmogenic right ventricular cardiomyopathy (ARVC), Cell adhesion molecules (CAMs), Dilated cardiomyopathy, ECM-receptor interaction, Focal adhesion, Hematopoietic cell lineage, Hypertrophic cardiomyopathy (HCM), Pathways in cancer, Regulation of actin cytoskeleton, Small cell lung cancer

**Product images:**



Western blot analysis of extracts from 293 cells and HeLa cells, treated with etoposide (25uM, 24hours), using ITGA6 (light chain, Cleaved-Glu942) antibody. The lane on the right is treated with the synthesized peptide.