

## Product datasheet for TA311737

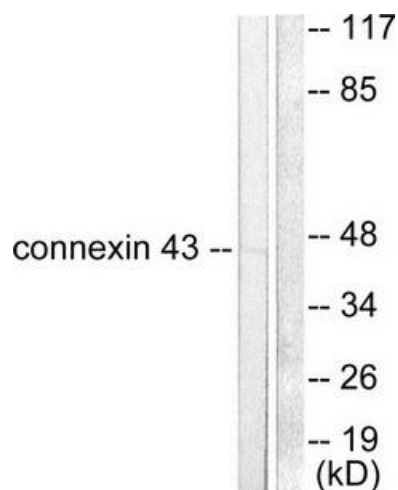
### GJA1 Rabbit Polyclonal Antibody

#### Product data:

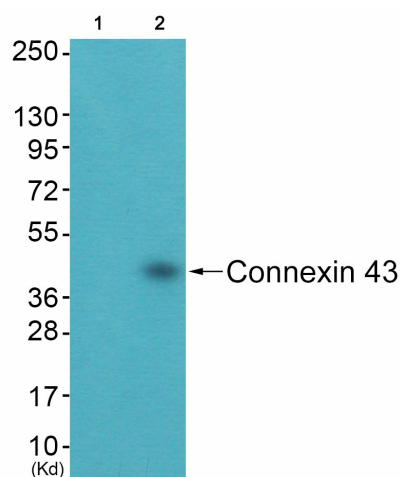
Product Type:	Primary Antibodies
Applications:	IF, IHC, WB
Recommended Dilution:	WB: 1:500~1:3000, IHC: 1:50~1:100, IF: 1:100~1:500, ELISA: 1:10000
Reactivity:	Human, Mouse, Rat
Host:	Rabbit
Isotype:	IgG
Clonality:	Polyclonal
Immunogen:	The antiserum was produced against synthesized peptide derived from human Connexin 43.
Formulation:	Phosphate buffered saline (without Mg <sup>2+</sup> and Ca <sup>2+</sup> ), pH 7.4, 150mM NaCl, 0.02% sodium azide and 50% glycerol.
Concentration:	lot specific
Purification:	The antibody was affinity-purified from rabbit antiserum by affinity-chromatography using epitope-specific immunogen.
Conjugation:	Unconjugated
Storage:	Store at -20°C as received.
Stability:	Stable for 12 months from date of receipt.
Gene Name:	gap junction protein alpha 1
Database Link:	<a href="#">NP_000156</a> <a href="#">Entrez Gene 14609 Mouse</a> <a href="#">Entrez Gene 24392 Rat</a> <a href="#">Entrez Gene 2697 Human</a> <a href="#">P17302</a>
Synonyms:	AVSD3; CMDR; CX43; EKVP; GJAL; HLHS1; HSS; ODDD; PPKCA
Note:	Connexin 43 antibody detects endogenous levels of total Connexin 43 protein.
Protein Families:	Druggable Genome, Ion Channels: Other, Transmembrane
Protein Pathways:	Arrhythmogenic right ventricular cardiomyopathy (ARVC), Gap junction


[View online »](#)

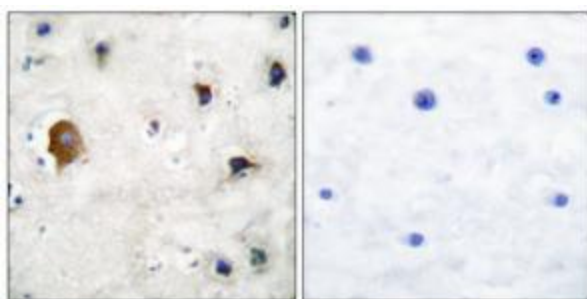
## Product images:



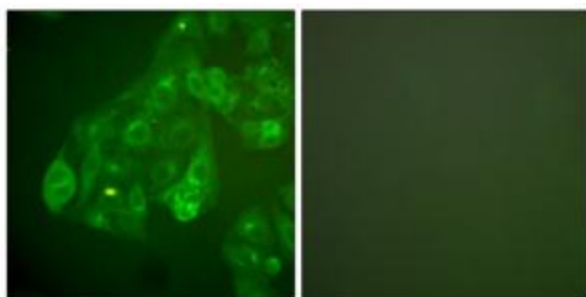
Western blot analysis of extracts from A549 cells, using Connexin 43 antibody. The lane on the right is treated with the synthesized peptide.



Western blot analysis of extracts from 3T3 cells (Lane 2), using Connexin 43 Antibody. The lane on the left is treated with synthesized peptide.



Immunohistochemical analysis of paraffin-embedded human brain tissue using Connexin 43 antibody. The picture on the right is treated with the synthesized peptide.



Immunofluorescence analysis of A549 cells, Connexin 43 antibody. The picture on the right is treated with the synthesized peptide.