

## Product datasheet for **TA311733**

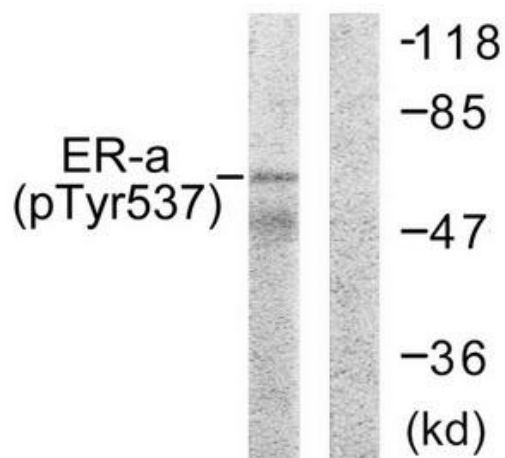
### Estrogen Receptor 1 (ESR1) Rabbit Polyclonal Antibody

#### Product data:

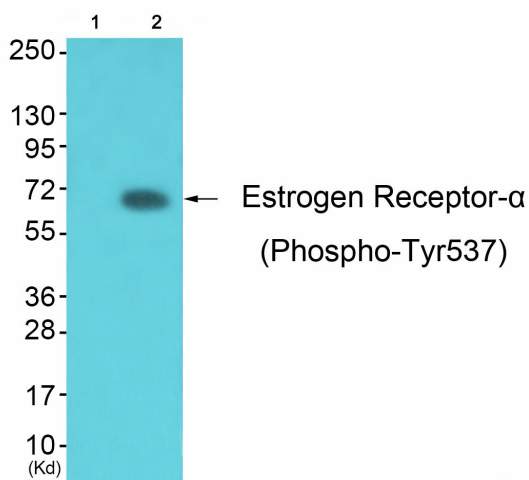
Product Type:	Primary Antibodies
Applications:	IHC, WB
Recommended Dilution:	WB: 1:500~1:3000, IHC: 1:50~1:100, ELISA: 1:1000
Reactivity:	Human, Mouse
Modifications:	Phospho-specific
Host:	Rabbit
Isotype:	IgG
Clonality:	Polyclonal
Immunogen:	The antiserum was produced against synthesized phosphopeptide derived from human ER- $\alpha$ around the phosphorylation site of tyrosine 537 (P-L-YP-D-L).
Formulation:	Phosphate buffered saline (without Mg <sup>2+</sup> and Ca <sup>2+</sup> ), pH 7.4, 150mM NaCl, 0.02% sodium azide and 50% glycerol.
Concentration:	lot specific
Purification:	The antibody was affinity-purified from rabbit antiserum by affinity-chromatography using epitope-specific immunogen.
Conjugation:	Unconjugated
Storage:	Store at -20°C as received.
Stability:	Stable for 12 months from date of receipt.
Gene Name:	estrogen receptor 1
Database Link:	<a href="#">NP_000116</a> <a href="#">Entrez Gene 13982 Mouse</a> <a href="#">Entrez Gene 2099 Human</a> <a href="#">P03372</a>
Synonyms:	ER; Era; ESR; ESRA; ESTRR; NR3A1
Note:	Estrogen Receptor-. (Phospho-Tyr537) antibody detects endogenous levels of ER-. only when phosphorylated at tyrosine 537.
Protein Families:	Druggable Genome, Nuclear Hormone Receptor, Transcription Factors



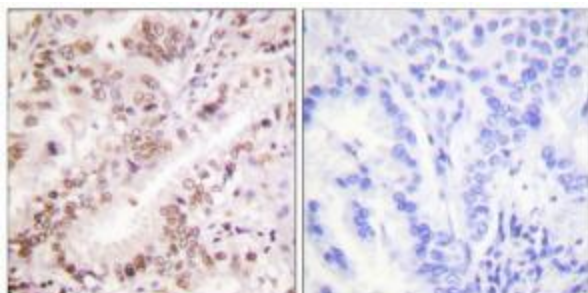
[View online »](#)

**Product images:**


Western blot analysis of extracts from 293 cells, using Estrogen Receptor-a (Phospho-Tyr537) antibody. The lane on the right is treated with the synthesized peptide.



Western blot analysis of extracts from K562 cells (Lane 2), using Estrogen Receptor-a (Phospho-Tyr537) Antibody. The lane on the left is treated with synthesized peptide.



Immunohistochemistry analysis of paraffin-embedded human lung carcinoma tissue using Estrogen Receptor-a (Phospho-Tyr537) antibody. The picture on the right is treated with the synthesized peptide.