

Product datasheet for **TA311731**

Estrogen Receptor 1 (ESR1) Rabbit Polyclonal Antibody

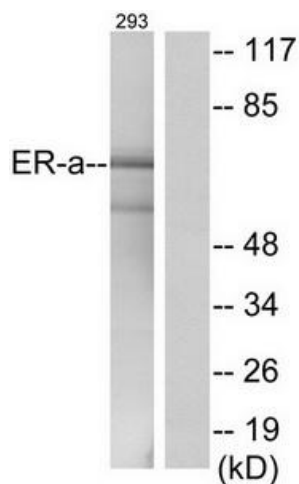
Product data:

Product Type:	Primary Antibodies
Applications:	IHC, WB
Recommended Dilution:	WB: 1:500~1:3000, IHC: 1:50~1:100, IF: 1:100~1:500, ELISA: 1:1000
Reactivity:	Human, Mouse
Host:	Rabbit
Isotype:	IgG
Clonality:	Polyclonal
Immunogen:	The antiserum was produced against synthesized non-phosphopeptide derived from human Estrogen Receptor- α around the phosphorylation site of tyrosine 537 (P-L-YP-D-L).
Formulation:	Phosphate buffered saline (without Mg ²⁺ and Ca ²⁺), pH 7.4, 150mM NaCl, 0.02% sodium azide and 50% glycerol.
Concentration:	lot specific
Purification:	The antibody was affinity-purified from rabbit antiserum by affinity-chromatography using epitope-specific immunogen.
Conjugation:	Unconjugated
Storage:	Store at -20°C as received.
Stability:	Stable for 12 months from date of receipt.
Gene Name:	estrogen receptor 1
Database Link:	NP_000116 Entrez Gene 13982 Mouse Entrez Gene 2099 Human P03372
Synonyms:	ER; Era; ESR; ESRA; ESTRR; NR3A1
Note:	Estrogen Receptor-. (Ab-537) antibody detects endogenous levels of total Estrogen Receptor-. protein.
Protein Families:	Druggable Genome, Nuclear Hormone Receptor, Transcription Factors

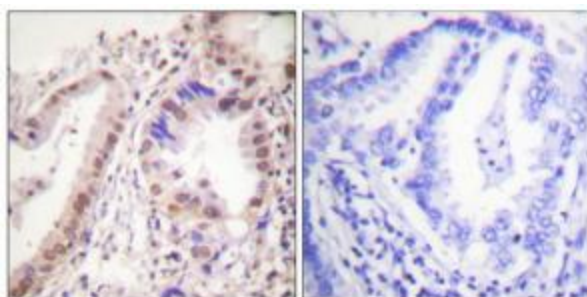


[View online »](#)

Product images:



Western blot analysis of extracts from 293 cells, using Estrogen Receptor-a (Ab-537) antibody. The lane on the right is treated with the synthesized peptide.



Immunohistochemistry analysis of paraffin-embedded human lung carcinoma tissue using Estrogen Receptor-a (Ab-537) antibody. The picture on the right is treated with the synthesized peptide.