

Product datasheet for **TA311725**

TAZ Rabbit Polyclonal Antibody

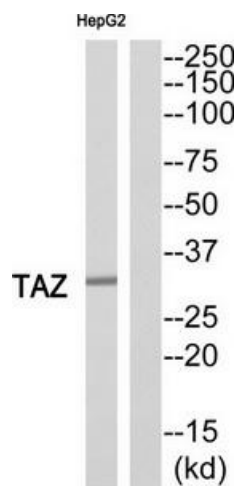
Product data:

Product Type:	Primary Antibodies
Applications:	WB
Recommended Dilution:	WB: 1:500~1:3000, ELISA: 1:1000
Reactivity:	Human
Host:	Rabbit
Isotype:	IgG
Clonality:	Polyclonal
Immunogen:	The antiserum was produced against synthesized peptide derived from Internal of human TAZ.
Formulation:	Phosphate buffered saline (without Mg ²⁺ and Ca ²⁺), pH 7.4, 150mM NaCl, 0.02% sodium azide and 50% glycerol.
Concentration:	lot specific
Purification:	The antibody was affinity-purified from rabbit antiserum by affinity-chromatography using epitope-specific immunogen.
Conjugation:	Unconjugated
Storage:	Store at -20°C as received.
Stability:	Stable for 12 months from date of receipt.
Gene Name:	tafazzin
Database Link:	NP_000107 Entrez Gene 6901 Human Q16635
Synonyms:	BTHS; CMD3A; EFE; EFE2; G4.5; LVNCX; Taz1
Note:	TAZ antibody detects endogenous levels of total TAZ protein.
Protein Families:	ES Cell Differentiation/IPS, Transmembrane



[View online »](#)

Product images:



Western blot analysis of extracts from HepG2 cells, using TAZ antibody. The lane on the right is treated with the synthesized peptide.