

## Product datasheet for **TA311724**

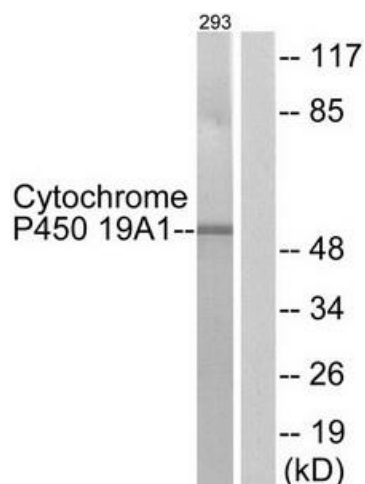
### Aromatase (CYP19A1) Rabbit Polyclonal Antibody

#### Product data:

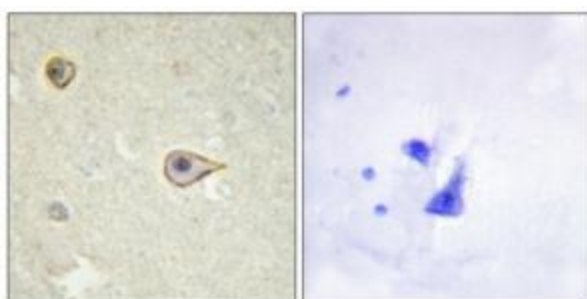
Product Type:	Primary Antibodies
Applications:	IF, IHC, WB
Recommended Dilution:	WB: 1:500~1:3000, IHC: 1:50~1:100, IF: 1:100~1:500, ELISA: 1:20000
Reactivity:	Human, Mouse, Rat
Host:	Rabbit
Isotype:	IgG
Clonality:	Polyclonal
Immunogen:	The antiserum was produced against synthesized peptide derived from internal of human Cytochrome P450 19A1.
Formulation:	Phosphate buffered saline (without Mg <sup>2+</sup> and Ca <sup>2+</sup> ), pH 7.4, 150mM NaCl, 0.02% sodium azide and 50% glycerol.
Purification:	The antibody was affinity-purified from rabbit antiserum by affinity-chromatography using epitope-specific immunogen.
Conjugation:	Unconjugated
Storage:	Store at -20°C as received.
Stability:	Stable for 12 months from date of receipt.
Gene Name:	cytochrome P450 family 19 subfamily A member 1
Database Link:	<a href="#">NP_000094</a> <a href="#">Entrez Gene 13075 Mouse</a> <a href="#">Entrez Gene 25147 Rat</a> <a href="#">Entrez Gene 1588 Human</a> <a href="#">P11511</a>
Synonyms:	ARO; ARO1; CPV1; CYAR; CYP19; CYPXIX; P-450AROM
Note:	Cytochrome P450 19A1 antibody detects endogenous levels of total Cytochrome P450 19A1 protein.
Protein Families:	Druggable Genome, P450
Protein Pathways:	Androgen and estrogen metabolism, Metabolic pathways



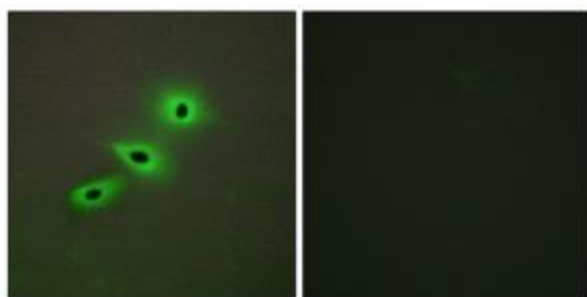
[View online »](#)

**Product images:**


Western blot analysis of extracts from 293 cells, using Cytochrome P450 19A1 antibody. The lane on the right is treated with the synthesized peptide.



Immunohistochemistry analysis of paraffin-embedded human brain tissue using Cytochrome P450 19A1 antibody. The picture on the right is treated with the synthesized peptide.



Immunofluorescence analysis of A549 cells, using Cytochrome P450 19A1 antibody. The picture on the right is treated with the synthesized peptide.