

Product datasheet for **TA311722**

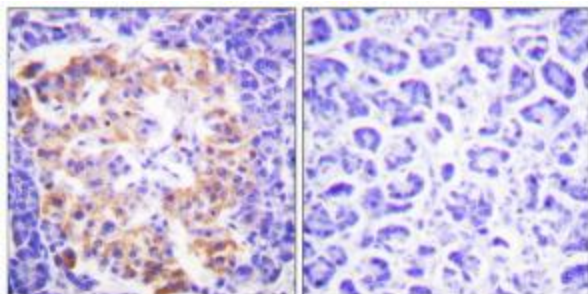
Collagen III (COL3A1) Rabbit Polyclonal Antibody

Product data:

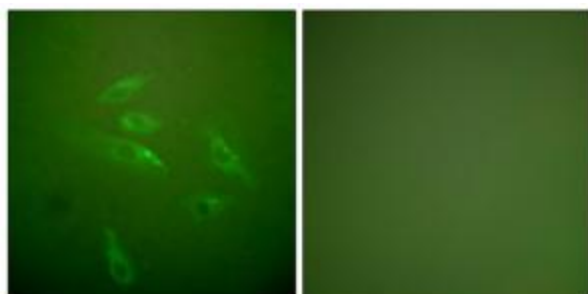
Product Type:	Primary Antibodies
Applications:	IF, IHC
Recommended Dilution:	IHC: 1:50~1:100, IF: 1:100~1:500, ELISA: 1:5000
Reactivity:	Human, Mouse, Rat
Host:	Rabbit
Isotype:	IgG
Clonality:	Polyclonal
Immunogen:	The antiserum was produced against synthesized peptide derived from internal of human collagen III.
Formulation:	Phosphate buffered saline (without Mg ²⁺ and Ca ²⁺), pH 7.4, 150mM NaCl, 0.02% sodium azide and 50% glycerol.
Concentration:	lot specific
Purification:	The antibody was affinity-purified from rabbit antiserum by affinity-chromatography using epitope-specific immunogen.
Conjugation:	Unconjugated
Storage:	Store at -20°C as received.
Stability:	Stable for 12 months from date of receipt.
Gene Name:	collagen type III alpha 1 chain
Database Link:	NP_000081 Entrez Gene 12825 Mouse Entrez Gene 84032 Rat Entrez Gene 1281 Human P02461
Synonyms:	EDS4A
Note:	Collagen III antibody detects endogenous levels of total collagen III protein.
Protein Families:	Druggable Genome
Protein Pathways:	ECM-receptor interaction, Focal adhesion



[View online »](#)

Product images:

Immunohistochemistry analysis of paraffin-embedded human pancreas tissue, using Collagen III antibody. The picture on the right is treated with the synthesized peptide.



Immunofluorescence analysis of HeLa cells, using Collagen III antibody. The picture on the right is treated with the synthesized peptide.