

Product datasheet for **TA311721**

Collagen III (COL3A1) Rabbit Polyclonal Antibody

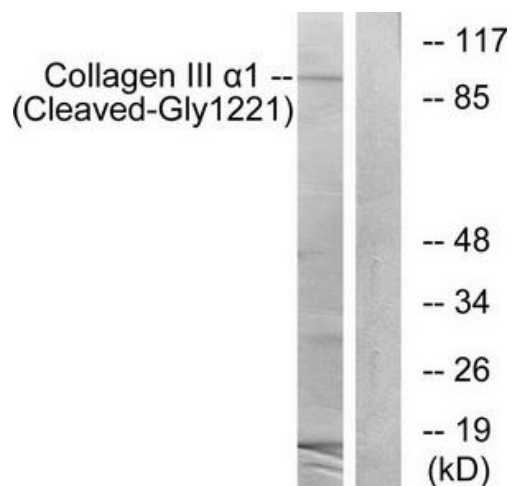
Product data:

Product Type:	Primary Antibodies
Applications:	WB
Recommended Dilution:	WB: 1:500~1:3000, ELISA: 1:10000
Reactivity:	Human
Host:	Rabbit
Isotype:	IgG
Clonality:	Polyclonal
Immunogen:	The antiserum was produced against synthesized peptide derived from human Collagen III a1.
Formulation:	Phosphate buffered saline (without Mg ²⁺ and Ca ²⁺), pH 7.4, 150mM NaCl, 0.02% sodium azide and 50% glycerol.
Concentration:	lot specific
Purification:	The antibody was affinity-purified from rabbit antiserum by affinity-chromatography using epitope-specific immunogen.
Conjugation:	Unconjugated
Storage:	Store at -20°C as received.
Stability:	Stable for 12 months from date of receipt.
Gene Name:	collagen type III alpha 1 chain
Database Link:	NP_000081 Entrez Gene 1281 Human P02461
Synonyms:	EDS4A
Note:	Collagen III .1 (Cleaved-Gly1221) antibody detects endogenous levels of fragment of activated Collagen III .1 resulting from cleavage adjacent to Gly1221.
Protein Families:	Druggable Genome
Protein Pathways:	ECM-receptor interaction, Focal adhesion



[View online »](#)

Product images:



Western blot analysis of extracts from A549 cells, treated with etoposide (25 μ M, 24hours), using Collagen III α 1 (Cleaved-Gly1221) antibody. The lane on the right is treated with the synthesized peptide.