

Product datasheet for **TA311719**

ALDOB Rabbit Polyclonal Antibody

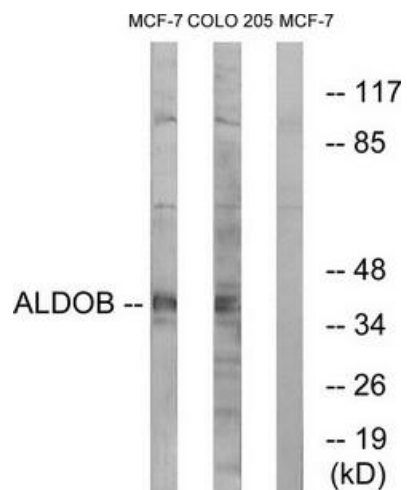
Product data:

Product Type:	Primary Antibodies
Applications:	WB
Recommended Dilution:	WB: 1:500~1:3000, ELISA: 1:20000
Reactivity:	Human, Mouse, Rat
Host:	Rabbit
Isotype:	IgG
Clonality:	Polyclonal
Immunogen:	The antiserum was produced against synthesized peptide derived from internal of human ALDOB.
Formulation:	Phosphate buffered saline (without Mg ²⁺ and Ca ²⁺), pH 7.4, 150mM NaCl, 0.02% sodium azide and 50% glycerol.
Concentration:	lot specific
Purification:	The antibody was affinity-purified from rabbit antiserum by affinity-chromatography using epitope-specific immunogen.
Conjugation:	Unconjugated
Storage:	Store at -20°C as received.
Stability:	Stable for 12 months from date of receipt.
Gene Name:	aldolase, fructose-bisphosphate B
Database Link:	NP_000026 Entrez Gene 24190 Rat Entrez Gene 230163 Mouse Entrez Gene 229 Human P05062
Synonyms:	ALDB; ALDO2
Note:	ALDOB antibody detects endogenous levels of total ALDOB protein.
Protein Families:	Druggable Genome
Protein Pathways:	Fructose and mannose metabolism, Glycolysis / Gluconeogenesis, Metabolic pathways, Pentose phosphate pathway



[View online »](#)

Product images:



Western blot analysis of extracts from MCF-7 cells and HUVEC cells, using ALDOB antibody. The lane on the right is treated with the synthesized peptide.